

Lenovo Product Portfolio

Hub and Spoke



**Martin
Basford**

martin@spoke-it.co.uk

Powered by

intel®

**Smarter
technology
for all**

Lenovo



Your items for view

Tablets

Tablets	Page 5
SubCategory_EnterpriseTablet	Page 6

Workstations

Mobile Workstations	Page 7
---------------------------	--------

Laptops

Mini Laptops	Page 9
Enterprise Productivity	Page 9

Desktops / All-In-Ones

Micro Desktops	Page 11
Towers	Page 11
Modular All-In-Ones	Page 13
Regular All-in-Ones	Page 13

Accessories

Visuals

Lenovo Services

Encryption Services	Page 41
Keep Your Drive	Page 42
On-site Service	Page 43
Premier Support	Page 44



Lenovo Product Portfolio

Did you know?

- According to the Corporate Knights annual ESG-focused rankings, Lenovo has been recognized as one of the world's Most Sustainable Companies in 2022, for the 3rd consecutive year in a row
- With 46 world-class labs, 6500 globally recognized patents to its name and 100+ major design awards, Lenovo has a legacy of innovation.
- Lenovo ranked #16 in Gartner's 2021 Top 25 Global Supply Chain, highlighting their operational excellence in the global supply chain community
- Lenovo believes in reliable end-to-end security of devices. Security begins with design and continues through supply chain, delivery, and the full lifecycle of the device.



Unlocking opportunity for your business

Today's business leaders face evolving marketplace demands that require a new level of agility, security, and sustainability.



Transformed
workforce and
workplace



Intelligent
infrastructure
transformation



Transformative
and sustainable
Innovation

Smarter technology for all

We use our innovation, end-to-end expertise, and global scale, reach, & channel partnerships to deliver smarter solutions that drive better outcomes'



We empower businesses to transform with purpose

Pioneer and enabler of intelligent transformation with a history of first-to market innovations and a commitment to doubling R&D in the near-term with further US\$1 billion Investment in AI over the next 3 years.



We lead and act globally, and partner locally

Our 35 factories in 180 markets give us a global reach to more than one billion customers, while our channel-centric approach and expansive network of trusted partners provide local expertise and support.



We enable our customers from pocket to cloud

Lenovo is the only global technology provider with an integrated, open choice ecosystem of devices and solutions from the phone in their pocket to the hybrid cloud powering their enterprise.



We deliver solutions that drive better outcomes

Combining hardware, software, infrastructure, and solutions, Lenovo TruScale gives you single-source convenience for all your technology needs— with the simplicity and scalability of a flexible, pay-as-you-go model - anywhere in the world.

Tablets

Uncover a selection of tablets crafted for mobile workers, including basic models for frontline tasks and laptop-replacement devices. Enjoy extended battery life, robust processors, security features, and integrated digital pens for note-taking and sketching, fostering continuous connectivity and productivity.

Tablets

From basic handhelds to 2-in-1 devices, these solutions offer mobile workers maximum flexibility and may be considered as companion devices or PC replacements.

Lenovo IdeaPad Series



Lenovo Tablet Series



ThinkPad X1 Series



Lenovo Ideapad D330

Ideal for users who travel frequently for work, this 10.1" Windows tablet has up to 13 hours of battery life, so users can power through the busiest of workdays. Optional 4G LTE connectivity provides access to cloud data and apps, even when outside of WiFi range. The digital pen is useful for writing notes or sketching on the go, while the optional keyboard can be attached to create a basic notebook.



adjustable screen angle

Key Specs

- Intel Celeron or Pentium Silver processor
- 10.1" touchscreen, up to Full HD (1920x1200)
- Powered by Windows 10 Pro

ThinkPad X12 Detachable

More powerful than a tablet, but less cumbersome than a laptop, this 12.3" detachable is a reliable companion for professionals who spend more time in the field. Its uncompromising performance is powered by up to 11th Gen Intel Core i7 vPro Quad Core processors, 1TB ultra-fast SSD storage, and Intel Iris Xe graphics. Plus, the versatile form factor, excellent battery life (10+ hrs), and best-in-class connectivity options (4G/5G) seamlessly boost productivity on the move.



Lenovo Precision Pen



Key Specs

- Up to 11th Gen Intel Core i7 processor
- 12.3" touchscreen, FHD+ (1920x1280), optional digital pen
- Powered by Windows 10 Pro

Workstations

These powerful client computing solutions combine advanced graphics, server-grade processors and multi-drive storage arrays with patented cooling and diagnostic features. With built-in tools to optimize performance for a range of professional software applications, our extensive portfolio includes ultramobile laptops, micro-desktops and the largest multi-processor desktop solutions.

Desktop Workstations

Each workstation is built for future expansion and is tested to exceed the requirements of the most demanding software applications.

Mobile Workstations

Designed for power users working and travelling, these devices are optimized for a range of software titles, with professional-grade graphics and processors.

ThinkPad P1 Series



ThinkStation P7 Series



ThinkPad P7 Series



ThinkStation P6 Series



ThinkPad P Series (15.6")



ThinkStation P5 Series

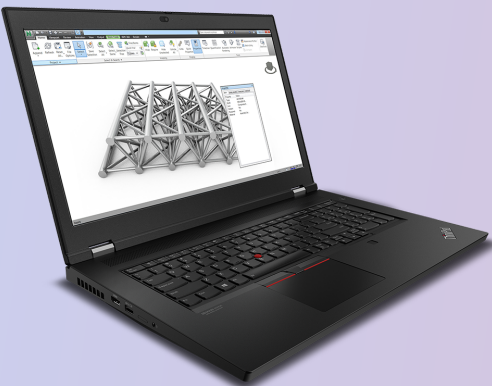


ThinkStation P3 Series



ThinkPad P17 Gen 1

Designed for advanced users who often need to carry their work with them. This mobile workstation features powerful NVIDIA Quadro RTX graphics, an improved thermal design for more effective cooling and Ultra Performance Mode that allows the device to deliver maximum performance – perfect for handling heavy workloads like data analytics and computer-aided design. There's WiFi 6 technology for even faster internet speeds and best-in-class security features protect sensitive business data.



Easy access rear ports

Key Specs

- up to Intel Xeon processor W-10885M or 10th Gen Intel Core i9 processor
- 17.3" screen, up to 4K (3840x2160) Dolby Vision HDR
- up to NVIDIA Quadro RTX 5000 Max-Q, 16GB
- Powered by Windows 10 Pro for Workstations

Laptops

From optimized, portable designs to the latest processing power, experience unparalleled quality and reliability with Lenovo's laptop portfolio. Powered by the latest processors, these laptops deliver blazing performance and incorporate cutting-edge features for seamless multitasking. Furthermore, ample memory and top-tier graphics ensure professionals can run demanding applications without experiencing any lag.

Mini Laptops


Maximize productivity with this laptop that offers the performance, manageability, built-in security features, and stability for what business professionals require.

Lenovo Edu Series

Basic Laptops

Designed with budget buyers in mind, these laptops excel in both aesthetics and productivity features, making them well-suited for essential office work and on-the-go usage.

Lenovo V Series

Lenovo 14 Series

Lenovo K Series

Modern Professional

Sleek and sophisticated, these laptops seamlessly integrate the latest consumer technology with robust business-grade security and support services, offering a unique value proposition for users.

ThinkBook Series

Enterprise Productivity

With business-grade capabilities, robust security and enhanced productivity, experience versatile performance in the device.

ThinkPad T Series

ThinkPad L Series

ThinkPad E Series

Enterprise Ultra-portables

Compact, high-performing, and loaded with business-amplifying functionalities, these laptops are the top choice for consistent business voyagers.

ThinkPad X1 Series

ThinkPad X Series

Mini Laptops

Lenovo 300e Windows 2nd Gen

This compact convertible is agile, rugged, reliable and now 10% thinner than the previous generation. The 360° hinge allows for use across four modes – laptop, tablet, tent, and stand – enabling better task compatibility and efficiency. The optional world-facing 5MP camera makes it easy to capture photos and insert into projects and presentations - all on one device.



garaged digital pen



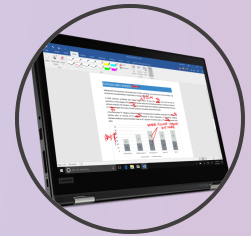
Key Specs

- Intel Celeron or Pentium Silver processor
- 11.6" touchscreen, HD (1366x768), optional garaged pen
- Powered by Windows 10 Pro

Enterprise Productivity

ThinkPad L13 Yoga Gen 2 (Intel)

More flexible than a traditional laptop, its 360° hinge allows mobile workers to use it as a laptop or a tablet; or even in tent or stand mode for 1:1 presentations inside or outside the office. Configure with a range of enterprise security features including a fingerprint reader, IR camera and smart card reader. Meanwhile, the battery lasts up to 10 hours, ensuring uninterrupted productivity on the go.



fold to create a tablet



Key Specs

- up to 11th Gen Intel Core i7 processor
- 13.3" touchscreen, Full HD (1920x1080), garaged digital pen
- Powered by Windows 10 Pro

Desktops / All-In-Ones

Lenovo desktops offer flexibility for a range of office environments including sleek space-saving all-in-ones and micro-desktops that can be hidden from view. Each device has different performance and future upgrade capabilities, designed to meet your changing needs over time.

Micro Desktops

With a wide range of configurations built for demanding workflows, this micro desktop is engineered to deliver the ultimate power, performance, reliability, and security.

Towers

Compact, high-performing, and loaded with business-amplifying functionalities, our desktop towers are the top choice among users across all industries.

Modular All-In-Ones

Versatile and instantly configurable, our modular all-in-one neatly houses a Tiny PC and display (sold separately) inside the monitor. Compatible with most ChromeBox and Thin Clients, it combines the space-saving design of traditional all-in-one desktops with an upgradeable architecture.


Regular All-in-Ones

All-in-One desktops save space by integrating the PC into the display and have built-in web cams and speakers and require only one power cable.

ThinkCentre M9 Series Tiny



ThinkCentre M9 Series Desktop



ThinkCentre Tiny-in-One Series




ThinkCentre M Series All-in-One



ThinkCentre M8 Series Tiny



ThinkCentre M8 Series Desktop



Lenovo V Series All-in-One



ThinkCentre M7 Series Tiny




ThinkCentre M7 Series Desktop




Lenovo V Series Desktop



ThinkEdge



ThinkCentre Neo



ThinkCentre Nano Series



Micro Desktops

ThinkCentre M75n IOT

Drive automation and data exchange with a fully-equipped IoT gateway device in a 0.55L micro-desktop form factor. Thanks to the ultra-compact design and multiple compatible mounting options, it can be placed almost anywhere. There are onboard USB and serial ports, Wi-Fi, Bluetooth and ethernet connections for data transport. Optional I/O box extends connectivity with additional serial ports, DI and DO connectors.



optional I/O
expansion box



Key Specs

- up to AMD Athlon Silver processor
- AMD Radeon graphics in processor
- Powered by Windows 10 Pro

Towers

Lenovo V55t-15API

This desktop is a great choice for refreshing old devices or supporting the needs of an expanding workforce. Behind the modern, professional design, is a desktop built for today's business environment of office productivity and cloud-based apps. Everything works faster and easier with the latest storage technologies, up to AMD Ryzen 5 processor, a self-help software tool, and plenty of USB ports for connecting office peripherals and charging mobile devices.



honeycombed air
vents



Key Specs

- up to AMD Ryzen 5 processor
- optional NVIDIA GeForce GT 730 2GB graphics
- Powered by Windows 10 Pro

ThinkCentre M75s Gen 2

Looking for a versatile device to support existing or new desk workers in your company? This compact, space-saving desktop can be configured to meet a wide variety of user expectations - from basic admin use to extensive productivity tasks. It comes with thoughtful features like Smart Power-On to which enables the PC to be started via a keyboard shortcut instead of reaching for the power button.



reduced depth and width



Key Specs

- Up to AMD Ryzen 9 Pro processor
- Optional AMD Radeon 520 2GB graphics
- Powered by Windows 11 Pro

ThinkCentre M920t

This premium desktop can be configured for the needs of advanced users who don't need a professional workstation. It supports multiple storage devices, powerful graphics cards, numerous security features and the latest remote management technologies. It's also thoughtfully designed with a carry handle making it easier to relocate, front-accessible USB ports including a USB-C port to charge mobile devices, optional dust filters, and tool-less access to upgrade many of the components.



optional removable storage drive



Key Specs

- up to 9th Gen Intel Core i9 processor
- optional AMD Radeon 520 or RX 550X, or NVIDIA GeForce GT 730 or GTX 1060 graphics
- Powered by Windows 10 Pro

Modular All-In-Ones

ThinkCentre Tiny-In-One 24 Gen 4

Can be paired with any ThinkCentre Tiny desktop (including models with 65W CPU) to build a 23.8" modular all-in-one in less than a minute – no tools required. Integrated 1080p rotatable camera and mic support web conferencing, and there's also an optional IR camera or optional touchscreen.



2x 2W stereo speakers



Key Specs

- optional touchscreen
- Rotatable 1080p camera

Regular All-in-Ones

Lenovo V30a 22iL AIO

With its sleek design, near-borderless display and reliable performance, this 21.5" all-in-one is well-suited for use by both front-office staff and back-office teams of any modern business. It is powered by the latest 10th Gen Intel processors and packs in several security features. The FHD anti-glare display with wide viewing angles and low blue light output option is comfortable to work on, even for extended hours. 6x conveniently-placed USB ports enable users to connect essential peripherals.



easy-access side ports



Key Specs

- up to 10th Gen Intel Core i5 processor
- 21.5" Full HD (1920x1080) screen, IPS, 1000:1 contrast ratio, 250 nits
- Powered by Windows 10 Pro

Regular All-in-Ones

Lenovo V30a 24 IML

This 23.8" all-in-one, with up to 10th Gen Intel® Core processors, will modernize any space with its sleek design and anodized aluminum stand. It includes a low blue-light mode which reduces eye fatigue, and an optional camera with privacy cover. It supports both Amazon Alexa and Microsoft Cortana voice assistants, enabling busy users to interact hands-free with the device, for example to look up information, or have emails read aloud.



sleek & modern design



Key Specs

- up to 10th Gen Intel Core i5 processor
- 23.8" Full HD (1920x1080) screen, IPS, 1000:1 contrast ratio
- Powered by Windows 10 Pro

Regular All-in-Ones

Lenovo V540-24IWL AIO

This 23.8" all-in-one will modernize any space with its sleek design. It includes thoughtful features that enhance user-comfort and productivity, including a low blue-light mode which reduces eye fatigue, and a Skype-certified camera with privacy cover. It supports both Amazon Alexa and Microsoft Cortana voice assistants, enabling busy users to interact hands-free with the device, for example to look up information, or have emails read aloud.



fully adjustable screen



Key Specs

- up to 8th Gen Intel Core i5 processor
- 23.8" Full HD (1920x1080) screen, IPS, 1000:1 contrast ratio
- Powered by Windows 10 Pro

Lenovo 65W USB-C AC Travel Adapter



More Space, More Freedom

Designed to make business travel light and easy, the Lenovo 65W USB-C AC Travel Adapter takes up only 90 cubic centimeters of space and weighs just 117g. That's 44% smaller and 50% lighter than our previous generation of chargers,

More Speed, More Ease

This 65W PD 3.0 certified adapter delivers enough power to charge almost any USB-C device rapidly. Better yet, it's reversible Type-C connector allows it to be plugged into any socket regardless of how it's held or inserted.

More Adapters, More Locations

4 Interchangeable plugs for international business trips (US, EU, AU, UK) with a simple twist-and-lock mechanism.

Specifications

AC Input : 100V - 240V ~1.7A; 50 Hz - 60 Hz

DC Output : 5V/3A, 9V/3A, 15V/3A, 20V/3.25A

Connection : USB-C supporting Smartphones, Laptops

Plugs : 4 wall mount plugs

Dimensions: Width: 59.7mm (2.35") Depth: 42.5mm (1.67") Height: 30mm (1.18")

Weight: 117g (0.26lb) , US Plug: 13g (0.029lb)

Cable length : 1.8m (70.7")

Part Number

40AW0065WW GOA6N065WW 40AW0065EU-(EU plug)

Lenovo Powered USB-C Travel Hub



One cable, six options

Easily connects to an external 4K or 1080p display with HDMI or VGA, supports wired RJ45 network, two USB-A devices and USB-C power pass-through – all through one USB-C cable.

Understated design, travel-ready

Makes travel light and easy, and packs unobtrusively into a bag. Ready for everything, the travel hub can provides power to a USB-C laptop with an additional 45W or 65W USB-C power adapter (sold seperately).

Plug and play functionality

Easy to use and driver-ready, the Hub works with any USB-C device. Especially compatible with ThinkPad systems, delivering enterprise-class features such as MAC address pass-through, Wake-on-LAN and PXE boot.

Specifications

Connectivity: USB-C cable

Video Ports:

1 x HDMI
1 x VGA

Maximum Number of Displays: 1

Maximum Video Output: 1 x 4K @ 60 Hz

Dimensions: Width: 130mm (5.12") Depth: 53mm (2.09") Height: 17mm (0.67")

Weight: Starting at 116g (0.25lbs)

Colour: Iron Grey

USB Ports:

1 x USB-A 3.0I
1 x USB-A 2.0
1 x USB-C power pass-through

Ethernet: Gigabit

Audio: N/A

Power Consumption: 15W; could be powered by a system without additional AC adapter

USB-C Laptop Charging: with 45W & 65W USB-C power adapter

PXE Boot: Selected ThinkPad laptops

MAC Address Pass-through: Selected ThinkPad laptops

Wake-on-LAN: Selected ThinkPad laptops

Part Number

4X90S92381

Lenovo USB-C to 4 Port USB-A Hub



Plug-and-play design

The Lenovo USB-C to 4 Port USB-A Hub works right out of the box so you can get to work right away. There's no need to download any drivers.

Fast and versatile

A wide range of legacy USB devices can be connected via the 4x USB3.1 Gen 1 ports on the expansion hub including printers, scanners, webcams and other peripherals. It also enables high-speed data transfers.

Easy to carry

Weighing only 42 grams, it's small and easy to fit in your pocket or a carry case compartment - so it is always with you when needed.

Specifications

Input Type: USB-C Male

Output Type: 4x Female USB-A Outputs (USB 3.1 Gen 1), up to 5 Gbps

Product dimensions:

(mm) : 95 x 37 x 12

(inches) : 3.7" x 1.5" x 0.5"

Cable length: 138mm (5.43")

Weight: 42g (0.092lbs)

Part Number

4X90X21427

Lenovo USB-C to VGA Adapter



One connection simplicity

This adapter has been designed to mirror a user's primary display or to extend it and expand their virtual workspace without the installation of additional drivers.

Flexible user-experience

Connect to any display, projector or TV featuring VGA input. USB-C to VGA conversion delivers high-quality video to your display, projector or TV with resolutions up to 1920x1200.

Lightweight design

Compact, portable build featuring familiar sleek design to complement other Lenovo products.

Specifications

Video output: supports extended mode, mirror mode

Max power consumption: 5V +/- 5%, 1.5A

Bandwidth supported: up to 5.4Gbit/s

Display resolutions supported:

WUXGA: 1920x1200, 60 Hz, 18 bpp, 193 MHz pixel clock rate

WUXGA: 1920x1200, 60 Hz (reduced blanking), 24 bpp, 154 MHz pixel clock rate

UXGA: 1600x1200, 60 Hz, 162 MHz pixel clock rate

SXGA: 1280x1024, 60 Hz, 108 MHz pixel clock rate

XGA: 1024x768, 60 Hz, 65 MHz pixel clock rate

SVGA: 800x600, 60 Hz, 40 MHz pixel clock rate

VGA: 640x480, 60 Hz, 25 MHz pixel clock rate

Weight: 45.3g (0.1lbs)

Dimensions: Width: 27mm (1.06"), Depth: 222mm (8.74"), Height: 12mm (0.47")

Part Number

GX90M44578

Lenovo Business Casual 17" Backpack



Multi-compartment design

This backpack features a multi-compartment design so you can easily organize and separate your laptop from other devices and essentials, and enjoy quick access on the fly.

Unbeatable durability

Built from rip-stop polyester and sturdy alloyed rings and buckles, the backpack is capable of withstanding challenging conditions and preventing workplace disasters.

Travel-ready construction

Adjustable shoulder straps, padded handles, and integrated charging port make travel easier than ever.

Specifications

Compatibility: Supports ThinkPad laptops up to 17"

Color: Charcoal Grey

Design feature:

Multi-compartment design

Easily organize and separate laptop from other essentials

Integrated charging port with charging capabilities

Durability: Made from rip-stop polyester and sturdy alloyed rings and buckles. Water-resistant fabric.

Dimensions: Width: 335mm (13.19"), Depth: 185mm (7.28"), Height: 500mm (19.69")

Weight: 840g (1.85lbs)

Part Number

4X40X54260

Protective Case for 300e & 500e Gen 2



2-in-1 design

Fitted with a convertible hinge, all cases support both laptop and tablet modes (300e and 500e). Implementation is quick and easy with intuitive snap-in installation feature. Cases are suitable for the classroom or industrial and outdoor use.

Protection against damage

Features reinforced edges and corner bumpers for protection against any accidental damage, dents and scratches. It is easy to clean too.

Classroom ready

Devices function perfectly with full access to keyboards and ports during use. For schools that use charging carts, the cases have been designed to fit inside most models. The rear of the case has a clear window to facilitate asset tagging.

Specifications

Part Number : 4X40V09688

Fits Up To: 100e Chrome (Intel processor) and 100e Windows
Color: Black/Transparent
Weight: 373.2g (0.82 lbs)

Part Number : 4X40V09689

Fits Up To: 100e Chrome (MediaTek processor)
Color: Black/Transparent
Weight: 380.4g (0.84 lbs)

Part Number : 4X40V09690

Fits Up To: 300e Chrome (MediaTek processor) and 300e Windows
Color: Black/Transparent
Weight: 345g (0.76 lbs)

Part Number : 4X40V09691

Fits Up To: 300e Chrome (Intel processor) and 500e Chrome
Color: Black/Transparent
Weight: 354.8g (0.78 lbs)

Part Number

100e: 4X40V09688 / 4X40V09689 || 300e: 4X40V09690 / 4X40V09691

ThinkPad X1 Leather Sleeve



Slim-line storage

Thin enough to fit inside another bag, this sleeve provides room for a laptop and extra easy-access storage for meeting essentials.

Timeless luxury

Craftsmanship quality, classic black leather exterior, and soft-touch gray interior provide unparalleled elegance while protecting Lenovo notebooks against scratches, dents, and bumps.

Inspired design

A dedicated slot keeps the user's pen or stylus always within reach, making it easy to take notes or draw on-the-go.

Specifications

Compatibility : Sized to fit the ThinkPad X1 Carbon (Gen 6, 7 & 8) and ThinkPad X1 Yoga (Gen 4 & 5), may also fit other laptops 14" and under

Dimensions : Height: 370mm (14.57") Width: 250mm (9.84") Depth: 1.8mm (0.07")

Weight : 0.43kg (0.95lb)

Color : Exterior Black, Interior Gray

Materials : Exterior Genuine Leather, Interior Microfiber Lining

Special Features : Back slip pocket for storage of accessories; elastic storage loop for pen or stylus

Part Number

4X40U97972

Lenovo Dual Platform Notebook & Monitor Stand



Ergonomic viewing

Place a monitor on the top platform to support easy setup and better ergonomics with a higher viewing angle.

Cable and Accessories Management

Rear cable management loops and concealed cable management in the bottom of the base help to keep the workspace tidy. Lower platform features retaining brackets for ThinkPad Docking Station (2013) series, enabling a tidy and compact work space.

Integrates with ThinkCentre Tiny

Underside of upper platform has a VESA mount for adding a Tiny PC mounting bracket, enabling the PC to be discreetly fixed in place, leaving the bottom shelf for storage or peripherals.

Specifications

Notebooks Supported: Supports any laptop up to 15.6"

Docks Supported: Retaining brackets for ThinkPad Docking Station (2013) series. Universal USB docks may also be placed on the lower platform (without using retaining brackets).

Monitors Supported : Up to 16kg (35lbs)

VESA Compatibility: Underside of upper platform has VESA mount for adding Tiny PC mounting bracket

Cable Management Feature: Rear cable management loop + concealed cable management in the bottom of the base

Part Number

4XF0L37598

ThinkCentre Nano Monitor Clamp



Optimize desk space

Secures a ThinkCentre Nano to the stand of selected ThinkVision monitors to create a cleaner working environment and a better user experience.

Specifications

Product Dimensions : Width: 67mm (2.65"), Length: 82.5mm (3.25"), Height: 67mm (2.64")

Product Weight : 222 g (7.83 oz)

Supported PC Weight : 5 kg (11.02lbs)

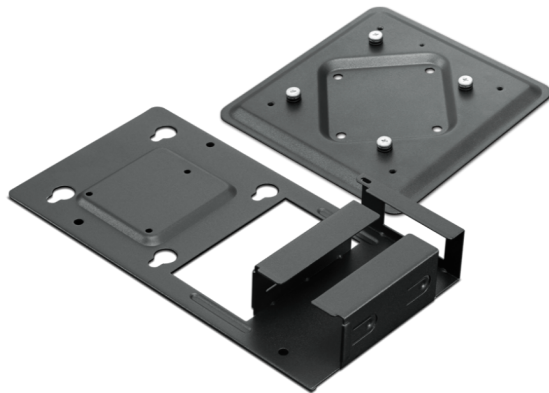
Color : Black

Compatibility : with ThinkCentre Nano & Nano IoT PCs and ThinkVision T-Series and P-Series monitors (except P32u and P44w)

Part Number

4XF0V81633

ThinkCentre Nano Power Cage Kit



Powering PCs

Effortlessly integrate a power adaptor with a Nano or Nano IoT PC. Simply secure the power adapter alongside the Nano or Nano IoT PC to make cable routing organised and hassle-free.

Flexible design

This kit is also VESA compatible, enabling users to mount the device to a wall, on top of a desk or any other compatible surface for added flexibility

Adapter compatibility

Power slot has been tailored to fit standard 65W and 90W Lenovo power adapters that are smaller than 105x44x28mm (4.1x1.7x1.1").

Specifications

Dimensions : Depth: 150mm (5.90"), Length: 227mm (8.94"), Height: 43mm (1.70")

Weight : 441 g (0.97lbs)

Height Lock : via screw connection

Physical Security : via screw connection

Supported weight Range : up to 5 kg (11.02 lbs)

Tilt Lock : via screw connection

Part Number

4XF0V81631

ThinkCentre Nano VESA Mount



Conveniently versatile

Features the universal VESA mount configuration, enabling users to attach the ThinkCentre Nano to any VESA-compatible device, or to mount it on a wall, ceiling or under the desk to save space or for specialist use-cases.

Easy to deploy

Designed exclusively for ThinkCentre Nano and ThinkCentre Nano IoT PCs. Installation is quick and simple, using a standard cross screwdriver.

Specifications

Dimensions: Depth: 150mm (5.91"), Length: 150mm (5.91"), Height: 13mm (0.51")

Weight: 312g (0.69lbs)

Height Lock: via screw connection

Physical Security: via screw connection

Supported weight Range: up to 5kg (11.02lbs)

Tilt Lock: via screw connection

Part Number

4XF0V81630

ThinkCentre Tiny Sandwich Kit II



Secure, space-saving solution

The Tiny Sandwich kit enables more desktop and floor space while providing a secure solution to protect your Tiny PC.

Reliable and easy to use

Compact design constructed from high-grade steel; comes with screws that allows anybody to mount it with ease

Full access to ports

The open architecture provides easy access to various ports and control buttons of the ThinkCentre Tiny PC.

Specifications

Color: Black

Material: Made from high-grade steel

Convenience: Easy access ports

Weight: 927g (2.04 lbs)

Part Number

4XH0N04098

ThinkCentre Tiny Under Desk Mount Bracket



Optimized use of space

Save desk and floor space with the ThinkCentre Tiny Under Desk Mount Bracket, made from high-grade steel for optimal protection. It is easy to install under a desk or any VESA-compatible furniture or surface, using just four screws. Also requires ThinkCentre Tiny VESA Mount II for mounting of the Tiny PC to the Under Desk Mount Bracket.

Easy access to controls

The open architecture provides easy access to media drives and control buttons of the ThinkCentre Tiny PC for a seamless user experience. Also provides space for a ThinkCentre Tiny Storage Unit or other external storage/DVD drive.

Specifications

Compatible Systems : ThinkCentre Tiny all generations M7, M8, M9 series

Color : Black

Dimensions : Width: 199mm (7.83"), Depth: 105mm (4.13"), Height: 228.9mm (9.02")

Packed Weight : 0.757kg (1.67lbs)

Part Number

0B47097

Lenovo Essential FHD Webcam



Just Like The Real Thing

The innovative FHD 1080P camera delivers perfect high-resolution video during video calls; set the scene with its ultra-wide 95° lens and 4X digital zoom while 2x built-in mics capture crisp stereo audio from all directions.

Easy Plug-and-Play Setup

Simply unpack and unfold the camera when you want to do a call, and plug the USB 2.0 cable into any Windows or Mac device. No drivers necessary.

Mount Anywhere & Everywhere

With a 1.8 metre cable, tripod support, and a flexible mounting mechanism, users can attach this webcam almost anywhere. Even difficult angles work, thanks to the wide-angle lens, tilt controls, and 360° rotation support. Just mount it, tilt it, and open the privacy shutter.

Specifications

Supported OS : Windows 7, Windows 8 or Windows 10, Mac OS X 10.14 or Higher, Ubuntu 20.04, Chromebook 85.0.4181.3

Resolution : 1920 x 1080 (MJPG), @ 30 Frame Rate (default)

Zoom : Supports Digital 4X Zoom

Focus : Fixed Focus

Field of View : 95°

Rating : 5V 150mA

Dimension : Width: 90mm (3.54"); Depth: 46mm (1.81"); Height: 62mm (2.48")

Weight : Starting at 130 g (0.28 lb)

Color : Black

Clip : Tripod-ready Universal Clip fits Laptops, Desktop and other LCD Monitors

Connectivity : USB 2.0

LED

Colors : White, Green
Brightness : 3 Lux

Cable Length

1.8 m (5.9 ft)

Part Number

4XC1B34802

ThinkPad Hybrid USB-C with USB-A Dock



One dock fits all

This docking station enhances the performance of Lenovo USB-C notebooks and tablets using USB-C connection, as well as previous generation notebooks through its USB-C to USB-A adapter.

Supports rich functionality

Supports dual 4K displays with DisplayPort and HDMI ports. A total of 6x downstream USB ports, including 1x USB-C and 3x USB 3.1 Gen 2 ports support fast data transfer to peripherals, and charging power.

Simplify enterprise management

Onboard Gigabit Ethernet with manageability features such as PXE boot, Wake-on-LAN from sleep mode, and MAC address pass-through.

Specifications

Interface: USB-C cable with USB-C to USB-A dongle

Power : ThinkPad 135W AC adapter (Slim tip)

Power Delivery : Yes

Output Power : 90W

Video Ports :

2 x DisplayPort

2 x HDMI

Supports up to 2x 4K displays

External Monitors supported: up to 2

Refresh Rate: DisplayPort: 3840 x 2160 @ 60 Hz; HDMI: 3840 x 2160 @ 60 Hz; Bundle DisplayPort 1 & DisplayPort 2 to the monitor: 5120 x 2880 @ 60 Hz

USB Ports :

3 x USB 3.1 Gen 2 (10 Gbps, 1 x always-on charging)

1 x USB-C (Gen 2, 5V / 3A power)

2 x USB 2.0

Ethernet (RJ45) : Gigabit Ethernet

Audio Combo Jack : Yes

Dimension : Width: 210 (8.27) Depth: 80.0 (3.15) Height: 30.0mm (1.18")

Weight : 480g (1.05lbs)

Network Manageability :

PXE Boot

Wake-on-LAN

MAC address pass-through

Part Number

40AF0135xx

ThinkPad Universal Thunderbolt 4 Smart Dock



One Cable For All Your Needs

The ThinkPad Universal Thunderbolt™ 4 Smart Dock adds 11+ productivity-enhancing ports to your PC in a single cable. With support for one 8K monitor or up to four 4K monitors, 40 Gbps data speeds via Thunderbolt™ 4, and 10 Gbps via USB-A, and rapid-charging for up to 100W laptops, you can drastically expand the potential of your workspace with ease.

Universal Dock Compatibility

Get more longevity from your dock with the forward-thinking universal design of the ThinkPad Universal Thunderbolt™ 4 Smart Dock that supports Thunderbolt™ 3 and 4, USB 4™, USB-C, and extended compatibility with a wide range of brands and Multi-OS notebooks.

Innovative Remote Management

Enter a new age of dock management with efficiency-enhancing innovations such as remote firmware updates without a PC connected, remote port management, data analytics reporting, diagnostic tools, and Microsoft Azure Sphere security solution that aim to streamline the workflow of IT managers and boosts their productivity.

Specifications

PERFORMANCE

Solution: Intel® Thunderbolt™ 4 Microsoft Azure Sphere

Connectivity: 0.7 m Thunderbolt™ 4 Cable

Video Port: 2x DisplayPort™ 1.4, 1x HDMI™ 2.1, 1x Thunderbolt™ 4

USB Port: 4 x USB-A 3.1 Gen 2 (10 Gbps, 1 x always-on charging), 1 x USB Type-C™ (10 Gbps, 5V/3A)

Video Resolution: Maximum 8K

Number of Displays Maximum: 4 x 4K or 1 x 8K

Audio: Stereo/Microphone Combo Max. Charging

DESIGN

Dimensions (L x M x H): 220 x 80 x 30 (mm), 8.67" x 3.15" x 1.18" (inches)

Weight Net Weight: Starting at 0.5 kg (1.1 lbs)

Kensington® Lock Slots: 1x K-lock Slot, 1x NanoSaver Lock Slot

CONNECTIVITY

vPro™: Yes

Ethernet: RJ45 (PXE Boot, WOL, MAC Address Pass-through Supported), WiFi

Bluetooth®: Yes

Part Number

40B10135XX

Lenovo Essential USB Mouse



Reliable

Plug-and-play wired USB connection never fails. Fully tested to rigorous standards to ensure compatibility across Lenovo systems

Sculpted for comfort

Full-size mouse designed for all-day use. Ideal for both left- and right-handed usage.

High-resolution sensor

Features 1600 dpi optical sensor for precise and accurate tracking. Works well on most surfaces.

Specifications

Connectivity: Wired via USB

OS Requirements: Windows 7, Windows 8, Windows 8.1, Windows 10

Cable Length: 1.8 m (70.9")

Sensor: Optical Sensor

Resolution: 1600 dpi

Scrolling: 2-way Scroll Wheel (up/down)

Number of Buttons: 3 (left click, right click, scroll click)

Button Life: Left/right click - Up to 8 Million clicks

Scroll wheel click: Up to 100,000 clicks

Design: Ambidextrous

Color: Black

Dimensions: Width: 63 mm (2.48") Depth: 111 mm (4.37") Height: 34 mm (1.34")

Weight: 120 g (0.26 lbs)

Part Number

4Y50R20863

Lenovo Professional Wireless Laser Mouse



Designed for All-day use

Designed for power users who want to work more effectively and efficiently, and provides ergonomic comfort for all-day use. The ambidextrous full-size design provides a secure grip whether you are left-handed or right-handed

All-surface freindly

Suitable for use on many surfaces, the 1600 DPI resolution and laser sensor is perfect for tracking down to the tiniest detail. Complete tasks with ease and professional-grade accuracy.

Plug-and-play

Connects easily with 2.4GHz wireless USB connection for stable connectivity. Supports Multiple Pairing Protocol for USB dongles, just get a replacement dongle in case the original gets lost.

Specifications

Color: Black

Connectivity: 2.4 GHz Wireless via Nano USB

Wireless Range: 10 metres

Hardware requirements: Supports PCs with USB port

Supported OS: Windows 7, Windows 8, Windows 8.1, Windows 10

Special Features:

Ambidextrous design

Multiple pairing protocol with Lenovo 2.4GHz Wireless replacement receiver

Mouse Button: 5 (left click, right click, scroll click, left/right tilt wheel)

Scrolling: Scroll Wheel (up/down/left/right)

Resolution: 1600 DPI

Sensor: Invisible laser sensor

Power: 2 AA batteries

Battery life: up to 24 months

Dimensions: Length: 64mm (2.52"), Depth: 113mm (4.45"), Height: 34mm (1.34")

Weight: 80g (0.18lbs)

Part Number

4X30H56886

ThinkCentre Tiny IV DVD Burner Kit



Expand capabilities

Enable crisp and clear DVD playback and reliable DVD recording with this DVD Burner Kit specifically designed for the ThinkCentre Tiny.

Mount compatible

Can be secured to a ThinkCentre Tiny PC using the ThinkCentre Tiny VESA Mount II (sold separately)

Specifications

Color : Black

Connection Type : USB interface

Compatibility : Tiny 4

Power consumption : 5V/1.85A

Average access time : DVD-ROM 145ms CD-ROM 125ms

Read Speed : DVD-ROM 3.3-8x CAV 4.58-11.08 Mbytes/s

Write Speed : DVD-R(1-2x) 2xCLV 2.77Mbytes/s

Sustained Transfer rate : DVD-ROM 22.16 Mbytes/s(16x)max CD-ROM 6000kB/s (40x)max

Packed Weight : 500g (1.10 lbs)

Part Number

4XA0N06917

Lenovo Desktop Privacy Filter from 3M



Prioritizing privacy

Patented microblouver technology darkens the screen at specific angles to protect on-screen data such as login credentials, company financial records and other private data secure from visual hackers.

Use and re-use

Installation is quick and intuitive. Once in place, the high-grade optical film ensures high clarity with no distortion. Install and remove multiple times without worry - it does not leave any residue behind.

One filter. Two sides.

Reversible design with two finishing options: gloss for better clarity or matte option with ant-reflective coating for more comfortable viewing in brighter environments.

Specifications

Filter Type: All-In-One desktops filter

Compatible Aspect Ratios: 21.5", 23.8" & 27.0" All-In-One desktop displays

Viewing Angle: 60 degrees

Brand: Lenovo, 3M

Surface Coating: Durable anti-glare surface coating

Transmission: 68%

Transmission Blockage Angle: Greater than 30° degrees for observers to the sides of the user

Part Number

For 21.5" displays : 4XJ0Q68426 For 23.8" displays : 4XJ0Q68427

Lenovo Kensington MicroSaver Cable Lock



Reliable protection

This 10mm (0.39") cable lock, one of the slimmest in the market, ensures business laptops and the data they store are well-protected. Adjacent ports can be used easily, thanks to the 180° hinge offering flexibility when inserting the key.

Featherlight cable

The lightweight carbon steel cable offers strong protection, but with less weight and more flexibility. At 1.8 meters (6 feet) long, there's some freedom when it comes to device mobility.

Wide compatibility

Suitable for users regardless of device. This cable lock is compatible with most Lenovo laptops, desktops, docks and monitors that feature a Kensington security slot.

Specifications

Locking Mechanism: T-bar Lock for Kensington Lock Slots

Cable Length: 1.80m (70.9")

Cable Thickness: 10mm (0.39")

Weight: 180g (6.3oz)

Color: Black

Part Number

4XE0N80914

Lenovo Monitor Privacy Filter from 3M



Privacy protection

Whether working from a public space or in an office environment, the filter's patented 3M microlouver privacy technology will block the vision of shoulder surfers preventing them from viewing the screen.

Easy to use

Installation is quick and intuitive. Once in place, the high-grade optical film ensures high clarity with no distortion. Removing and reapplying multiple times is simple too - it does not leave behind any residue.

Matte or gloss?

Reversible design with two finishing options: gloss for better clarity or matte option with ant-reflective coating for more comfortable viewing in brighter environments.

Specifications

Filter Type: Monitor filter

Compatible Aspect Ratios: 17.0", 19.0", 19.5", 21.5", 22.0", 24", 27.0" & 28.0" displays

Viewing Angle: 60 degrees

Brand: Lenovo, 3M

Surface Coating: Durable anti-glare surface coating

Transmission: 68%

Transmission Blockage Angle: Greater than 30° degrees for observers to the sides of the user

Part Number

Varies by monitor size

Lenovo Laptop Privacy Filter from 3M



Prioritizing privacy

Patented microlouver technology darkens the screen at specific angles to protect on-screen data such as login credentials, company financial records and other private data secure from visual hackers.

Use and re-use

Installation is quick and intuitive. Once in place, the high-grade optical film ensures high clarity with no distortion. Install and remove multiple times without worry - it does not leave any adhesive residue behind.

One filter. Two sides.

Reversible design with two finishing options: gloss for better clarity or matte option with ant-reflective coating for more comfortable viewing in brighter environments.

Specifications

Filter Type: Notebook Filter

Compatible Aspect Ratios: 11.6", 12.5", 13.3", 14.0", 15.6", 17.3" displays. Also available for touchscreen and Yoga models

Viewing Angle: 60 degrees

Brand: Lenovo, 3M

Surface Coating: Durable anti-glare surface coating

Transmission: 68%

Transmission Blockage Angle: Greater than 30° degrees for observers to the sides of the user

Part Number

Varies by product.

ThinkVision T34w-20



Specifications

- Integrated smartphone holder
 - USB-C + USB3.1 hub - provides through-connection between a PC and accessories
 - Smart Power - intelligently manages up to 75W of power output to connected USB devices
- Width: 808.6mm (31.84") Depth: 245mm (9.65") Height: 462.4-597.4mm (18.21-23.52") 9.91kg (21.85lbs)

Multitasking Made Easy

Make multitasking a breeze with this curved 34" WQHD resolution display. With a pronounced 1500R curvature and 21:9 screen ratio, users will find it more immersive, enabling them to work with multiple applications on a single screen. The exceptional 3000:1 contrast ratio and curvature reduces reflection and glare. Connect to legacy and modern devices with HDMI, DisplayPort or USB-C connectors.

USB Hub

Integrated USB hub; the USB-C upstream port can connect to a laptop providing a one-cable solution that simultaneously transmits power, video, audio, and data. 4x USB 3.1 Gen 1 downstream ports enable onward connection to peripherals. Smart Power technology distributes up to 75W to connected devices while optimizing energy consumption.

Ergonomics Enhanced

Designed keeping user comfort in mind, it has a higher lift range and broader tilt angles than most monitors. This minimizes wobble and allows users to adjust its height to fit their needs. The integrated phone holder and flexible cable management helps keep desks tidy and organized.

ThinkVision T32p-20



Specifications

- Integrated smartphone holder
- USB-C + USB3.1 hub - provides through-connection between a PC and accessories
- Smart Power - intelligently manages up to 75W of power output to connected USB devices

Width: 714.6mm (28.13") Depth: 235mm (9.25") Height: 469.4-604.4mm (18.48-23.79") 9.85kg (21.72lbs)

Unparalleled Visuals

Get impeccably detailed visuals with this 4K resolution 32" display - with four times more pixels than a conventional Full HD monitor. The near-edgeless screen, 99% sRGB colour gamut and TÜV Rheinland eye comfort certification, ensure it's easy to work on - whether editing graphics or working with spreadsheets and documents.

Uninterrupted Productivity

Integrated USB hub; the USB-C upstream port can connect to a laptop providing a one-cable solution that simultaneously transmits power, video, audio, and data. 4x USB 3.1 Gen 1 downstream ports enable onward connection to peripherals. Smart Power technology intelligently distributes up to 75W to other devices while optimizing overall power consumption.

Organized Workspace

Choose between VESA mount capability to attach to a wall or connect a Lenovo Adjustable Height Arm, or use the built-in display stand with lift, tilt, swivel, and pivot functionality. A smaller base with a phone holder and cable management helps to keep desks organized.

ThinkVision T27q-20



Specifications

- Integrated smartphone holder
 - USB3.1 hub - provides through-connection between a PC and accessories
- Width: 614mm (24.17") Depth: 208mm (8.19") Height: 429.4-564.4mm (16.9-22.22") 7.44kg (16.4lbs)

Uncompromised Visual Experience

Experience exceptional image quality on this 27" QHD display with 99% sRGB colour gamut and 1000:1 contrast ratio. Run multiple applications with ease by deploying two or more of these near-edgeless monitors side-by-side.

Efficient and Smart Working

Maximize productivity by connecting directly to all essential peripherals via the onboard USB hub with 1x USB Type-B 3.1 Gen1 upstream port for connection to a PC, and 4x downstream ports (USB 3.1 Gen1). Connect an optional speaker via the Audio Out port for a complete audio visual experience.

Ergonomic and Space-saving Solution

Place the monitor either on its sturdy stand or mount it on a wall via a VESA mount. The extended tilt and lift range enables users to find the perfect angle for working comfortably. The cable management and integrated phone holder further add to convenience, by keeping the desk space organized.

Encryption Services

pre-encrypt your devices for easy deployment

How do you currently encrypt your systems? Manual encryption can take your IT team an average of 120 minutes per device – time that can otherwise be used to focus on activities that deliver greater business value.

Encryption Services from Lenovo provides **factory-enabled full drive encryption**, eliminating the long wait time needed when full drive encryption is deployed outside of manufacturing.

- **Reduce the burden on your IT team:** your onsite technical staff can save approximately 120 minutes of encryption time per device.
- **Cut down on IT expenses:** save time and expenses with a reliable single-source solution.
- **Minimize risk of penalty:** most compliance standards today mandate encryption, or impose lesser penalties on encrypted drives.
- **Your choice:** we can use whichever encryption method and software you choose.



“

manual encryption can take your IT team an average of 120 minutes per device

”

Keep Your Drive

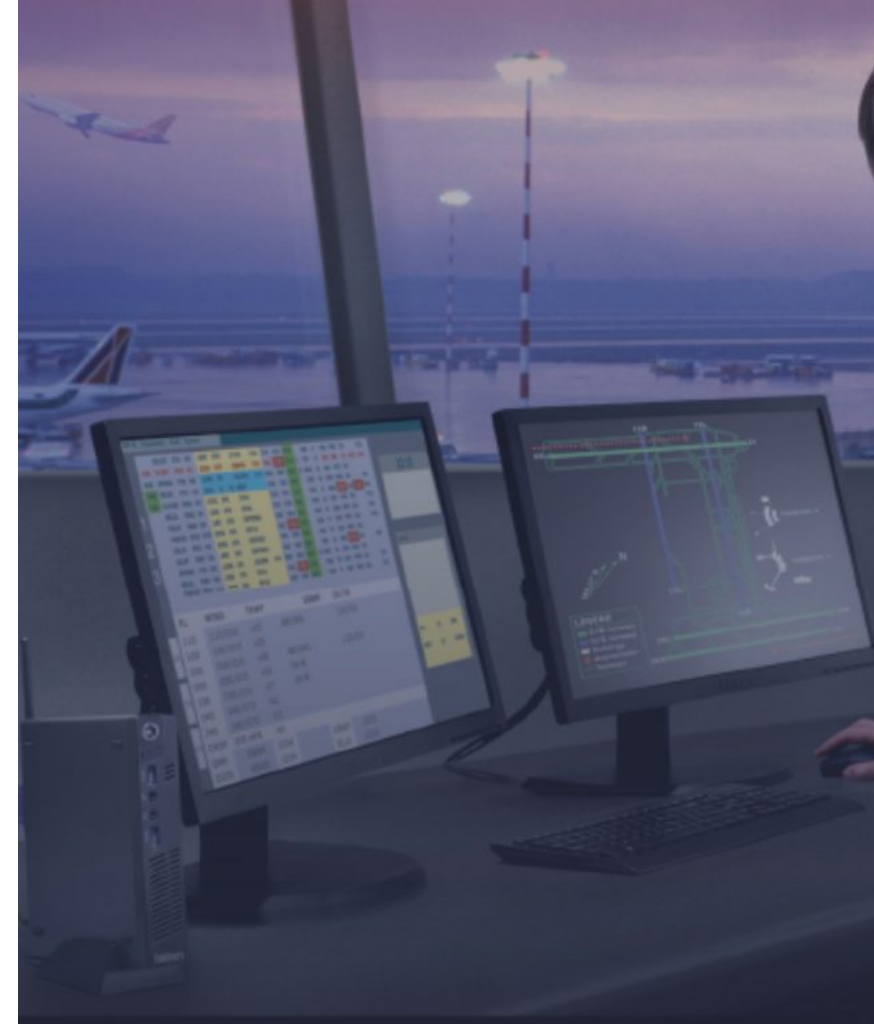
secure your data with Keep Your Drive (KYD)

What happens to the data residing in your systems in the event that a storage drive fails and needs to be replaced? Under the terms of the Lenovo Limited Warranty, when we replace a defective part, that part becomes the property of Lenovo.

The **Keep Your Drive Service** allows you to keep your drive(s) and dispose of business data on your terms, improving data security and ensuring compliance with data privacy and retention requirements, as well as mitigating civil liability risks associated with data breaches.

Because our diagnostics system can identify when a disk drive is defective, as soon as you report a problem we can quickly determine if the drive needs to be replaced. We will then authorize you to remove the drive before giving the device to us for installation of a new storage drive.

- **Predictable budgets:** provides predictable upfront costs versus finding budget in the event of drive failure.
- **Regulatory compliance & protection:** avoid the legal and monetary repercussions associated with a breach in data security.
- **Comprehensive coverage:** covers multiple drives in a system and multiple failures, for both HDD and SSD drives.
- **Data remains secure:** if your organization handles sensitive data, it eliminates the need for tracking failed drives in transit.



Because our diagnostics system can identify when a disk drive is defective, as soon as you report a problem we can quickly determine if the drive needs to be replaced



On-site Service

fast, on-site support

Today's technology and Lenovo's extensive reliability testing means it's unlikely to occur frequently, but if you are supporting hundreds of users and there are issues with mission-critical hardware, fixing and replacing parts suddenly becomes a priority.

Whether it's executives or specialist roles that need fast support, a large number of our customers select On-site Service.

With On-site service, if a problem can't be fixed remotely, a technician will visit your location to repair a device. The date and time for On-site service will be mutually agreed upon, normally by the next business day, and we will either repair or exchange the failing machine at your location and verify functionality.

With On-site Service you can:

- **Save resources:** Save time and money by having Lenovo support available onsite to address issues quickly.
- **Optimize efficiency:** Achieve maximum uptime and productivity when operating within a mission-critical environment.
- **Minimize unplanned expense:** Accurately budget for IT expenses at the time of PC purchase.

“

if a problem can't be fixed remotely, a technician
will visit your location to repair a device

”

Premier Support

Prioritize your business with Premier Support

Lenovo™ Premier Support manages routine support tasks, freeing IT focus on strategic efforts that move the organization forward. Boost end-user productivity and limit downtime with direct access to elite Lenovo engineers who provide unscripted, advanced hardware and software support.

- **Your direct line to a real expert:** Talk directly with Advanced Level 2 technical support agents located in your country. Each case will be dealt with end to end by the same support agent.
- **Don't wait for parts and fixes:** Premier customers get next business day onsite repairs. When an onsite visit is needed, we will accurately diagnose the problem beforehand, so an onsite technician will arrive prepared with the correct replacement part.
- **Do your end users frequently have software support needs?** Premier provides one point of contact for hardware and software issues. We support how-to questions and assist with hot fixes for a range of software in your organization.
- **Do your users travel internationally?** Users can find support when they are travelling overseas; phone numbers for Premier Support around the world can be found by entering your product serial number on support.lenovo.com

Premier Support is ideal for organizations with limited technical resources, or with geographically dispersed employees, high IT dependency or worldwide operations. Increase employee satisfaction with access to professional technical staff that will get straight to solving their problems, offer priority replacement parts, software support and international coverage. IT teams can spend less time on basic troubleshooting and mundane tasks, enabling them to focus on more critical projects like digital transformation initiatives, upgrades to infrastructure, security audits and more.

“

Advanced engineers. End-to-end case management. Faster, first-time resolution.

”

Premium Care

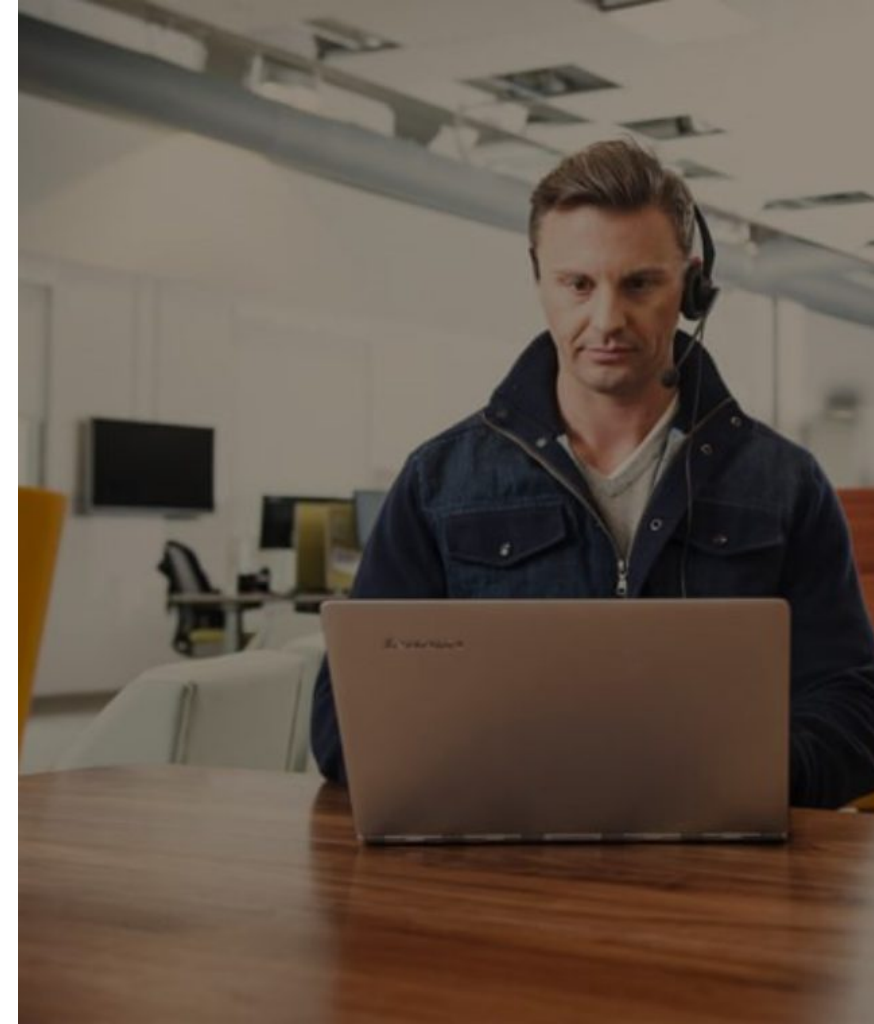
after-sales service will never be the same again

Premium Care is the hassle-free solution for all your technical support needs. With this front-of-the-queue and straight-to-the-experts customer support service, Lenovo provides you peace of mind and faster solutions, allowing you to get the best from your new device.

Premium Care delivers a superior level of customer care and tech support exclusively for Lenovo PC customers with benefits like direct access to trained and experienced staff, priority replacement of vital parts, and prevention of issues. It is designed to help individuals and businesses manage day-to-day IT challenges quickly and more efficiently. From assistance in setting up the PC to OS reinstallation, there are a range of support services available.

- **Easy, hassle-free solutions:** While Premium Care provides one point of contact for hardware and software issues, it also supports "getting started" and "how-to" questions for a range of popular business applications such as Microsoft Office 365, the Adobe suite, Norton, Skype, and many more.
- **Real fast:** Real-time solutions, whatever the issue, on your first contact. If needed, our team will schedule an onsite visit for the next business day.
- **PC health check:** Free annual PC Health Check that allows our experts to spot issues before you do. This preemptive action helps you avoid PC problems.

Talk directly with experienced tech support agents located in your country using the dedicated support hotline. There's also chat and email support for flexibility. Select Premium Care as an add-on service for new devices at lenovo.com or ask your sales representative to attach it to your in-store purchase.



“

Comprehensive Box to Boot support over the phone

”

Return To Depot Repair Warranty

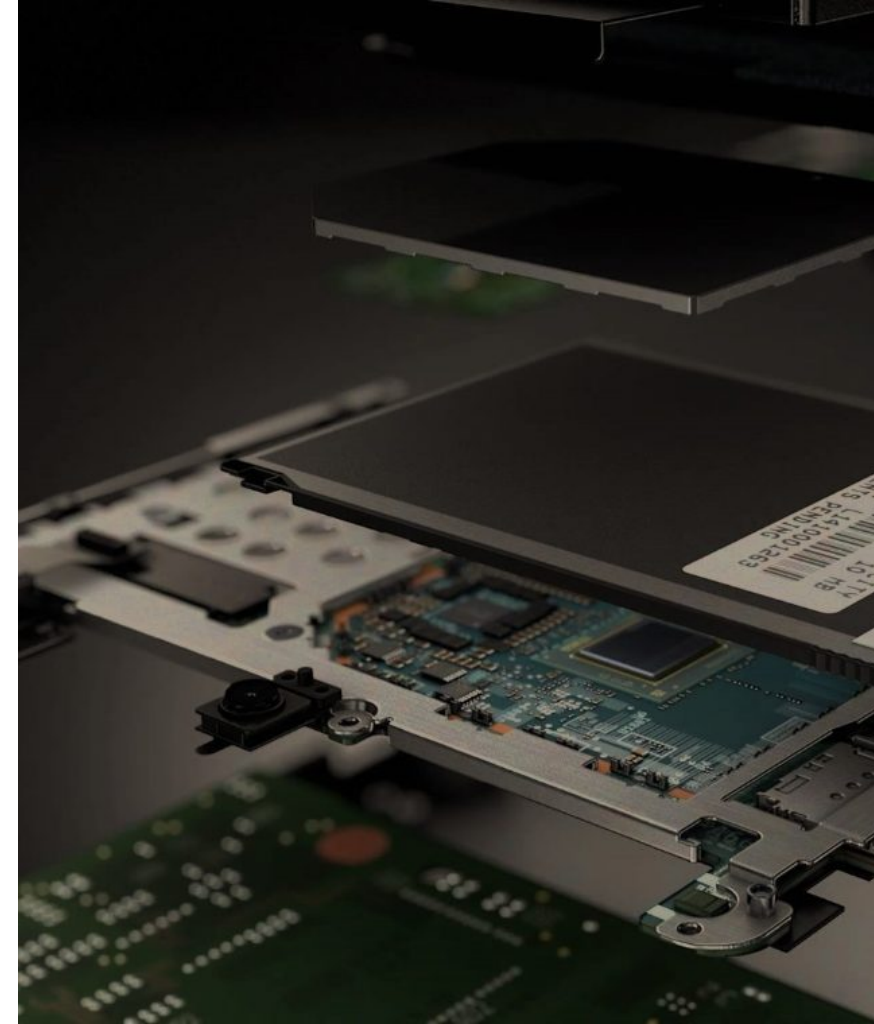
repair at the service center made easy

Customers who are required to budget all PC expenses at the time of purchase can opt for Lenovo's Return to Depot service. Under this, if a problem with a Lenovo device cannot be resolved via telephone or through the use of a Customer Replaceable Unit (CRU), the product will be repaired or replaced at a designated service center.

Instead of having to take it to a service center, Lenovo will pay for all three legs of shipping – the box to the customer, freight to the service center, and freight back to the customer. The average time to repair is 7-10 business days.

- **Save on shipping costs:** All charges for shipping systems back and forth to the repair center, including packaging, is paid for by Lenovo
- **Avoid unplanned operational expense:** Accurately budget for IT expenses at the time of PC purchase
- **Convenient and reliable repair services:** Avoid the hassle of carrying taking units to the repair center

For faster resolution, there is the option of upgrading to Expedited Return to Depot that typically has the device back to you by the 3rd business day.



“

remote repairs made easy with shipping paid for
by Lenovo

”

Smart Image

one dynamic image to simplify provisioning

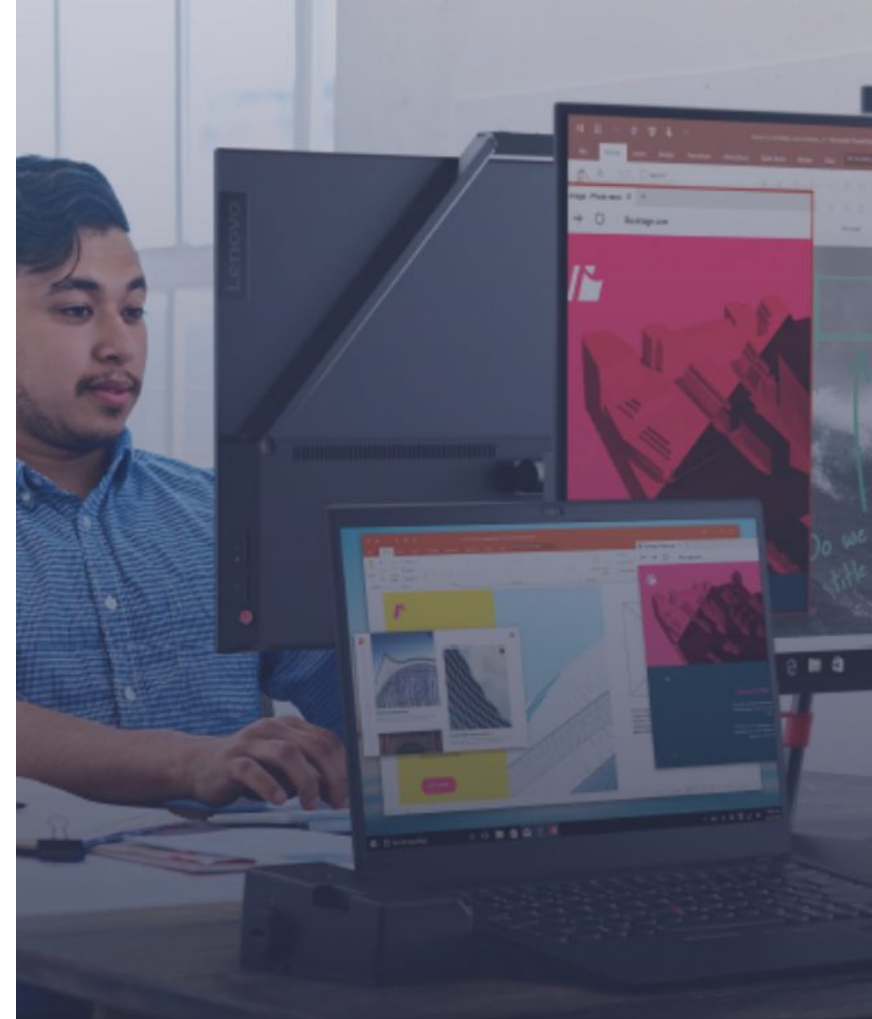
Managing multiple images for different devices can be time-consuming, as each must be regularly tested and verified as driver updates, hot fixes or preloaded app requirements change.

Lenovo Smart Image creates a **single dynamic image** that is **compatible across multiple Lenovo devices**; especially useful for growing businesses who may be purchasing new devices in waves of expansion.

You supply us your hardware-independent image, and we will add support for multiple Lenovo products. For added flexibility, we can update it quarterly, so as drivers are updated they are reflected in your image.

- Eliminates the need to manage multiple images and ensures compatibility across hardware platforms
 - Can be executed in just a few days
 - The solution is network, service partition, USB, and DVD deployable
 - Modular installation process enables you to choose which content you need in your solution
 - Reduce the storage footprint of the image with common drivers used across multiple models
- Converts your image to make it compatible across Lenovo devices
 - Useful for businesses purchasing devices in waves of expansion
 - Network, service partition, USB and DVD deployable

With Lenovo Smart Image, **time spent on a hardware transition can be reduced from weeks to a matter of days**. In addition, your ongoing image maintenance costs will drop significantly.



“

Lenovo Smart Image eliminates the need to manage multiple images and ensures compatibility across hardware platforms

”

Warranty Extensions

Customizable warranty services for your business

Warranty Extensions extend the term of the base warranty at the same service level, offering longer protection against unexpected repair or replacement costs. They are available for periods of up to five years for Think products and up to three years for Idea / Lenovo branded products. Depending on the initial base warranty of the system, service plans are available with the following service levels:

- **Purchase additional warranty periods** from 1 to 5 years; buy the warranty extension at the same time as new devices OR at any point afterwards
- **On-site Service:** if the problem can't be resolved over the phone, a technician will be dispatched to arrive on-site, typically the next day
- **Mail-in Service:** parts and labour repair coverage, where you are responsible for shipping to us
- **Depot Service:** parts and labour repair coverage, where shipping is paid for by Lenovo (typical turnaround time is 7-10 days including shipping)
- **Expedited Depot Service:** parts and labour coverage with expedited turnaround 3 business days

Talk to us about your replacement cycles and how we can customize a warranty package for your unique needs.

- **Cost savings:** Minimize unplanned operating and maintenance expenses.
- **Global coverage:** Consistent service levels for multinational organizations, with in-region and local-language support.
- **Increase uptime and productivity:** Convenient On-site and Expedited Depot options.
- **Customize to your needs:** Lenovo's flexible warranty options are designed to fit the varying needs within an organization. Match service coverage duration with the expected lifecycle of your PCs.

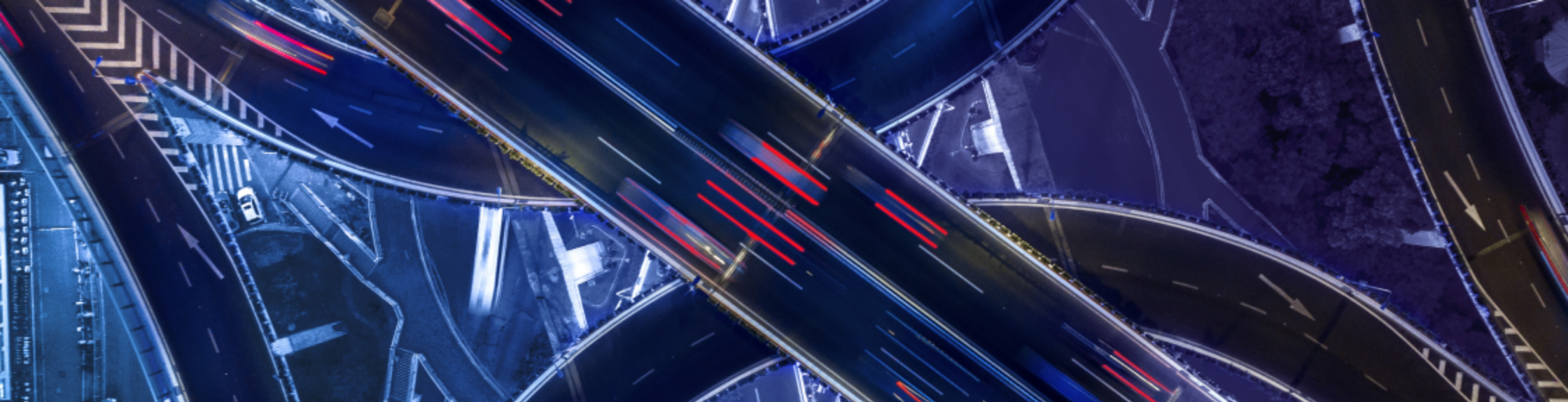
Warranty Upgrades enable customers to vary response time and level of service to match critical support needs. These options can be selected at the time of purchase or within the term of initial base warranty coverage.



“

50% of businesses claim to purchase extended warranties

”



**User free-text for QR. Ready
to bring your vision to life?**

07784796743

martin@spoke-it.co.uk

www.hubandspoke.co