

Lenovo Product Portfolio

# Bloom & Mellow - Lenovo Product Catalog

**Nana  
Asamany**

[office@bloommellowtech.co.uk](mailto:office@bloommellowtech.co.uk)

Powered by

**intel**®

**Smarter  
technology  
for all**

**Lenovo**



# Your items for view

## Workstations

Desktop Workstations .....	Page 6
Mobile Workstations .....	Page 7
Accessories .....	Page 8

## Laptops

Mini Laptops .....	Page 10
Basic Laptops .....	Page 12
Enterprise Productivity .....	Page 13
Accessories .....	Page 14

## Desktops / All-In-Ones

Micro Desktops .....	Page 16
Towers .....	Page 19
Modular All-In-Ones .....	Page 24
Regular All-in-Ones .....	Page 24
Accessories .....	Page 28

## Smart Devices

Meeting Room .....	Page 29
Accessories .....	Page 32





# Your items for view

## Lenovo Services

Accidental Damage Protection .....	Page 80
Advanced Deployment Services .....	Page 81
Asset Recovery .....	Page 82
Premier Support .....	Page 83
Premium Care .....	Page 84
Return To Depot Repair Warranty .....	Page 85
Sealed Battery Warranty .....	Page 86
Smart Image .....	Page 87
Warranty Extensions .....	Page 88
First Boot Services .....	Page 89
Technician Installed Customer Replaceable Unit .....	Page 90
On-site Service .....	Page 91
Encryption Services .....	Page 92
Expedited Depot Repair Warranty .....	Page 93
Asset Tagging .....	Page 94
Keep Your Drive .....	Page 95





## Lenovo Product Portfolio

# Did you know?

- According to the Corporate Knights annual ESG-focused rankings, Lenovo has been recognized as one of the world's Most Sustainable Companies in 2022, for the 3rd consecutive year in a row
- Lenovo ranked #16 in Gartner's 2021 Top 25 Global Supply Chain, highlighting their operational excellence in the global supply chain community
- Lenovo believes in reliable end-to-end security of devices. Security begins with design and continues through supply chain, delivery, and the full lifecycle of the device.
- Spread across 160 countries with 3,000 field service locations and over 150,000 partners, Lenovo is a globally trusted brand.





# Unlocking opportunity for your business

Today's business leaders face evolving marketplace demands that require a new level of agility, security, and sustainability.



Transformed  
workforce and  
workplace



Intelligent  
infrastructure  
transformation



Transformative  
and sustainable  
Innovation

## Smarter technology for all

We use our innovation, end-to-end expertise, and global scale, reach, & channel partnerships to deliver smarter solutions that drive better outcomes'



### We empower businesses to transform with purpose

Pioneer and enabler of intelligent transformation with a history of first-to market innovations and a commitment to doubling R&D in the near-term with further US\$1 billion Investment in AI over the next 3 years.



### We lead and act globally, and partner locally

Our 35 factories in 180 markets give us a global reach to more than one billion customers, while our channel-centric approach and expansive network of trusted partners provide local expertise and support.



### We enable our customers from pocket to cloud

Lenovo is the only global technology provider with an integrated, open choice ecosystem of devices and solutions from the phone in their pocket to the hybrid cloud powering their enterprise.



### We deliver solutions that drive better outcomes

Combining hardware, software, infrastructure, and solutions, Lenovo TruScale gives you single-source convenience for all your technology needs— with the simplicity and scalability of a flexible, pay-as-you-go model - anywhere in the world.

# Workstations

These powerful client computing solutions combine advanced graphics, server-grade processors and multi-drive storage arrays with patented cooling and diagnostic features. With built-in tools to optimize performance for a range of professional software applications, our extensive portfolio includes ultramobile laptops, micro-desktops and the largest multi-processor desktop solutions.

## Desktop Workstations

Each workstation is built for future expansion and is tested to exceed the requirements of the most demanding software applications.

## Mobile Workstations

Designed for power users working and travelling, these devices are optimized for a range of software titles, with professional-grade graphics and processors.

### ThinkPad P1 Series



### ThinkStation P7 Series



### ThinkPad P7 Series



### ThinkStation P6 Series



### ThinkPad P Series (15.6")



### ThinkStation P5 Series



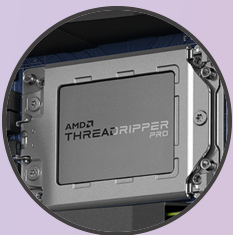
### ThinkStation P3 Series



## Desktop Workstations

# ThinkStation P620

This first-of-its-kind workstation, with up to 64-core Ryzen Threadripper PRO processors and PCIe Gen 4 support for graphics and M.2 memory, is designed for power users looking to take productivity to the next level. Apart from being ISV certified to run leading industry applications, it also supports up to NVIDIA Quadro RTX 8000 graphics and offers up to 20TB of storage. Business professionals can run multi-threaded applications or handle graphic-intensive workloads seamlessly without throttling the system.



AMD Threadripper PRO processor

## Key Specs

- Up to one AMD Ryzen Threadripper PRO 5000WX Series
- up to 2x Quadro RTX 8000, or 4x Quadro P2200
- up to 20TB 3.5" SATA HDD + 22TB M.2 SSD
- Windows 11 Pro, Windows 11 DG Windows 10 Pro 64, Windows 10 Pro 64



# ThinkPad P17 Gen 1

Designed for advanced users who often need to carry their work with them. This mobile workstation features powerful NVIDIA Quadro RTX graphics, an improved thermal design for more effective cooling and Ultra Performance Mode that allows the device to deliver maximum performance – perfect for handling heavy workloads like data analytics and computer-aided design. There's WiFi 6 technology for even faster internet speeds and best-in-class security features protect sensitive business data.



Easy access rear ports



## Key Specs

- up to Intel Xeon processor W-10885M or 10th Gen Intel Core i9 processor
- 17.3" screen, up to 4K (3840x2160) Dolby Vision HDR
- up to NVIDIA Quadro RTX 5000 Max-Q, 16GB
- Powered by Windows 10 Pro for Workstations

## Lenovo Dual Platform Notebook & M...

### Key Specs

- Raises the monitor up to a more ergonomic viewing height
- Integrates laptop, dock, and monitor, into one convenient work space
- Attach a ThinkCentre Tiny underneath the upper platform with a VESA mount (sold separate)





# Laptops

From optimized, portable designs to the latest processing power, experience unparalleled quality and reliability with Lenovo's laptop portfolio. Powered by the latest processors, these laptops deliver blazing performance and incorporate cutting-edge features for seamless multitasking. Furthermore, ample memory and top-tier graphics ensure professionals can run demanding applications without experiencing any lag.

## Mini Laptops

Maximize productivity with this laptop that offers the performance, manageability, built-in security features, and stability for what business professionals require.

**Lenovo Edu Series**




## Basic Laptops

Designed with budget buyers in mind, these laptops excel in both aesthetics and productivity features, making them well-suited for essential office work and on-the-go usage.

**Lenovo V Series**



**Lenovo 14 Series**



**Lenovo K Series**



## Modern Professional

Sleek and sophisticated, these laptops seamlessly integrate the latest consumer technology with robust business-grade security and support services, offering a unique value proposition for users.

**ThinkBook Series**



## Enterprise Productivity

With business-grade capabilities, robust security and enhanced productivity, experience versatile performance in the device.

**ThinkPad T Series**



**ThinkPad L Series**



**ThinkPad E Series**



## Enterprise Ultra-portables

Compact, high-performing, and loaded with business-amplifying functionalities, these laptops are the top choice for consistent business voyagers.

**ThinkPad X1 Series**



**ThinkPad X Series**



# Lenovo 300e Windows 2nd Gen

This compact convertible is agile, rugged, reliable and now 10% thinner than the previous generation. The 360° hinge allows for use across four modes – laptop, tablet, tent, and stand – enabling better task compatibility and efficiency. The optional world-facing 5MP camera makes it easy to capture photos and insert into projects and presentations - all on one device.



garaged digital pen



## Key Specs

- Intel Celeron or Pentium Silver processor
- 11.6" touchscreen, HD (1366x768), optional garaged pen
- Powered by Windows 10 Pro

# Lenovo 500e Chromebook 2nd Gen

This lightweight convertible Chromebook boosts individual productivity and facilitates collaboration in equal measure. A durable 360° hinge enables four modes of interaction – laptop, tablet, tent or stand – that users can adapt to their work style. Anytime, anywhere access to G Suite helps employees work and collaborate on the move, while the onboard pressure-sensitive digital pen is great for taking notes, reviewing presentations or signing documents.



garaged digital pen



## Key Specs

- Intel Celeron processor
- 11.6" touchscreen, HD (1366x768), garaged pen
- Google Chrome



# Lenovo 500e Chromebook Gen 3 (Intel)

This lightweight convertible Chromebook boosts individual productivity and facilitates collaboration in equal measure. A durable 360° hinge enables four modes of interaction – laptop, tablet, tent or stand – that users can adapt to their work style. Anytime, anywhere access to G Suite helps employees work and collaborate on the move, while the onboard pressure-sensitive digital pen is great for taking notes, reviewing presentations or signing documents.



Touchscreen with Corning Gorilla Glass



## Key Specs

- Intel Celeron/Pentium processor
- 11.6" touchscreen, HD (1366x768), garaged pen
- Google Chrome

# Lenovo 500w Gen 3 (Intel)

Packed with the latest Intel Pentium processor and integrated Intel UHD graphics, this lightweight convertible delivers learning anytime and anywhere. A durable 11.6" HD IPS touch display featuring pencil touch technology, and an optional garaged AES pen allows users to easily navigate, swipe, write and annotate documents on the screen while ensuring it stays smudge-free. Plus, up to 256GB of internal SSD storage ensures faster running of multiple applications.



Touchscreen with Corning Gorilla Glass



## Key Specs

- Intel Celeron/Pentium processor
- 11.6" touchscreen, HD (1366x768), garaged pen
- Windows 10 Pro

# Lenovo 14e Chromebook Gen 2

Thinner, lighter, more durable, and packed with new features ranging from more ports to Wi-Fi 6 capability to up to 16 hours of battery life, this Chromebook is powerful and versatile enough to meet every user's need, whether you're a tech-savvy sales exec or a young freelance writer just starting your journey. It is built on the popular Chrome platform and features the latest AMD® processor that can handle day-to-day tasks with ease.



Google G Suite applications



## Key Specs

- AMD 3000 Mobile Processor
- 14.0" screen, Full HD (1920x1080), optional touch
- Google Chrome

# Lenovo 14w Gen 2

This 14" ultraslim notebook is more than capable of handling the day-to-day tasks of basic users. Powered by dual core AMD 3000 mobile processors and backed by an easy-to-use Windows platform, it benefits from enhanced security features that help businesses keep their data and devices protected. Apps like Office 365 and StaffHub can be accessed from anywhere at any time, boosting productivity and facilitating real-time collaboration.



backlit keyboard



## Key Specs

- AMD 3000 Mobile Processor
- 14.0" screen, Full HD (1920x1080), optional touch
- Powered by Windows 10 Pro

# ThinkPad L13 Yoga Gen 2 (Intel)

More flexible than a traditional laptop, its 360° hinge allows mobile workers to use it as a laptop or a tablet; or even in tent or stand mode for 1:1 presentations inside or outside the office. Configure with a range of enterprise security features including a fingerprint reader, IR camera and smart card reader. Meanwhile, the battery lasts up to 10 hours, ensuring uninterrupted productivity on the go.



fold to create a tablet



## Key Specs

- up to 11th Gen Intel Core i7 processor
- 13.3" touchscreen, Full HD (1920x1080), garaged digital pen
- Powered by Windows 10 Pro

## ThinkPad X1 Leather Sleeve

### Key Specs

- ▶ Thin design to complement ThinkPad X1 Carbon or Yoga
- ▶ Black leather with soft-touch grey microfiber interior and magnetic closure
- ▶ Convenient storage loop for pen or style and rear pocket for accessories



## Lenovo 65W USB-C AC Travel Adapter



### Key Specs

- ▶ Ultraportable, lightweight design perfect for frequent commutes and travel
- ▶ Charge USB-C devices up to 65W. Universal travel plugs cover most regions and are easily replaceable
- ▶ Convenient carry pouch for travelers included



# Desktops / All-In-Ones

Lenovo desktops offer flexibility for a range of office environments including sleek space-saving all-in-ones and micro-desktops that can be hidden from view. Each device has different performance and future upgrade capabilities, designed to meet your changing needs over time.

## Micro Desktops

With a wide range of configurations built for demanding workflows, this micro desktop is engineered to deliver the ultimate power, performance, reliability, and security.

## Towers

Compact, high-performing, and loaded with business-amplifying functionalities, our desktop towers are the top choice among users across all industries.

## Modular All-In-Ones

Versatile and instantly configurable, our modular all-in-one neatly houses a Tiny PC and display (sold separately) inside the monitor. Compatible with most ChromeBox and Thin Clients, it combines the space-saving design of traditional all-in-one desktops with an upgradeable architecture.


## Regular All-in-Ones

All-in-One desktops save space by integrating the PC into the display and have built-in web cams and speakers and require only one power cable.

ThinkCentre M9 Series Tiny



ThinkCentre M9 Series Desktop



ThinkCentre Tiny-in-One Series




ThinkCentre M Series All-in-One



ThinkCentre M8 Series Tiny



ThinkCentre M8 Series Desktop



Lenovo V Series All-in-One



ThinkCentre M7 Series Tiny




ThinkCentre M7 Series Desktop




Lenovo V Series Desktop



ThinkEdge



ThinkCentre Neo



ThinkCentre Nano Series



# ThinkCentre M75n

Designed for ultimate flexibility, whether working from home or an office. Our smallest PC delivers all the functionalities of a regular desktop in a device not much bigger than a smartphone. Place it anywhere – on the desk, mounted on a wall or behind a display. A keyboard shortcut can power on the device if the power button is inaccessible. Powerful AMD Ryzen PRO processors with Radeon Vega graphics support a broad scope of workloads.



Remote Power On  
via USB

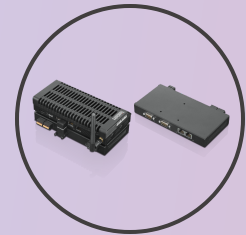


## Key Specs

- up to AMD Ryzen Pro 5 processor
- AMD Radeon Vega 6/8 Graphics in processor
- Powered by Windows 10 Pro

# ThinkCentre M75n IOT

Drive automation and data exchange with a fully-equipped IoT gateway device in a 0.55L micro-desktop form factor. Thanks to the ultra-compact design and multiple compatible mounting options, it can be placed almost anywhere. There are onboard USB and serial ports, Wi-Fi, Bluetooth and ethernet connections for data transport. Optional I/O box extends connectivity with additional serial ports, DI and DO connectors.



optional I/O  
expansion box



## Key Specs

- up to AMD Athlon Silver processor
- AMD Radeon graphics in processor
- Powered by Windows 10 Pro

# ThinkCentre M75n Thin Client

Deploy devices at a lower cost and secure company data with this miniature Thin Client solution. Choose from Windows IoT Enterprise or Linux-based Lenovo Terminal Operation System which supports Microsoft, VMware, Citrix and XenDesktop web applications. Our smallest PC delivers all the functionalities of a regular desktop in a device not much bigger than a smartphone. Place it anywhere – on the desk, mounted on a wall or behind a display.



not much bigger  
than a smartphone



## Key Specs

- AMD Ryzen 3 Pro 3300U processor
- AMD Radeon Vega 6 Graphics in processor
- Windows 10 IoT Enterprise -or- LeTOS V2 (Lenovo Terminal Operating System, Linux-based)

# ThinkCentre M90n Nano

Not much bigger than a smartphone, our smallest PC uses an energy-efficient CPU and provides the functionality of a desktop in a format that's infinitely flexible. Deploy with a single USB-C cable that connects to a compatible display providing both power and video connection. Place on a desk, use one of several mounting options, or slot into the rear bay of our Tiny-in-One displays.



full range of  
connectivity ports

## Key Specs

- up to 8th Gen Intel Core i7 processor
- Intel UHD Graphics in processor
- Powered by Windows 10 Pro



# ThinkCentre M90n Nano IoT

A versatile gateway for your IoT ecosystem, the ThinkCentre Nano IoT comes with edge-computing capabilities – with 8th Gen Intel processors, up to 8GB DDR4 memory and ultra-fast M.2 PCIe SSD storage. There are plenty of ports, wireless connectivity options and an optional I/O BOX, to connect everything from sensors, IoT endpoints, and legacy devices to cloud-based servers.



extensive I/O options



## Key Specs

- Intel Celeron or 8th Gen Core i3 processor
- Intel UHD Graphics in processor
- Powered by Windows 10 Pro or Windows 10 IoT Enterprise

# ThinkCentre M75q Gen 2

A micro-desktop packed with connectivity options and security features. Because of its compact 1L size, this device can be placed on or under a desk, behind a monitor or wall-mounted. It comes with Smart Power-On which enables the PC to be started via a keyboard shortcut, useful when the device is out of comfortable reach. Multitasking is easy with high-speed M.2 SSD storage, DDR4 memory, and support for up to 3 independent displays.



create an AIO with Tiny-in-One

## Key Specs

- Up to AMD Ryzen 7 Pro processor
- AMD Radeon graphics in processor
- Powered by Windows 11 Pro

# Lenovo V35s 07ADA

An excellent choice for businesses seeking a reliable, budget-friendly desktop. Under its compact 7.4 litre chassis, it packs in up to AMD Ryzen 5 Processors, integrated AMD Radeon Vega graphics and up to 32GB DDR4 memory. Enjoy faster boot times, better responsiveness and switch between tasks more seamlessly. There are plenty of USB ports to connect essential peripherals and expand device capabilities.



Padlock Loop & Kensington lock slot



## Key Specs

- up to AMD Ryzen 5 processor
- AMD Radeon or AMD Radeon Vega graphics
- Powered by Windows 10 Pro

# Lenovo V50s 07IMB

This compact desktop is much smaller than a regular tower, but retains many of the upgrade and performance capabilities, including two PCIe expansion slots. Completely re-designed with an Iron Grey finish, it has front air vents for improved air circulation and a new cooling system that can boost performance or reduce fan noise in different scenarios.



space-saving design



## Key Specs

- up to 10th Gen Intel Core i9 processor
- optional NVIDIA GeForce GT 730 2GB graphics or AMD Radeon 520
- Powered by Windows 10 Pro

# Lenovo V50t 13IMB

This 13.6-litre desktop featuring an all-new design in black and metallic Iron Grey finish can modernize any space. Equipped with powerful Intel processors, BIOS-based and physical security features, and more efficient cooling technology, it delivers the performance your workforce needs to stay on top of day-to-day workloads. And there are plenty of USB ports, including 4x USB3.1 ports conveniently in the front, for connecting essential peripherals.



Smart Cable Clip on the chassis



## Key Specs

- up to 10th Gen Intel Core i9 processor
- optional NVIDIA GeForce GT 730 2GB graphics or AMD Radeon 520
- Powered by Windows 10 Pro

# Lenovo V50t G2 13IOB

This sleek 13.6-litre desktop can modernize any workplace working with a fixed IT budget. Equipped with powerful Intel processors, BIOS-based and physical security features, and more efficient cooling technology, it delivers the performance your workforce needs to stay on top of day-to-day workloads. And there are plenty of USB ports, including 2x USB 3.2 Gen 1 and 2x USB 3.2 Gen 2 ports conveniently in the front, for connecting essential peripherals.



Multiple easy-access ports



## Key Specs

- Intel® Celeron®, Intel Pentium®, 10th Generation Intel Core™ i3 / i5 / i7 Processor, or 11th Generation Intel Core i5 / i7 / i9 Processor
- Optional NVIDIA GeForce RTX 3050 4GB graphics or AMD Radeon RX 550X
- Powered by Windows 10 Pro



# Lenovo V55t-15API

This desktop is a great choice for refreshing old devices or supporting the needs of an expanding workforce. Behind the modern, professional design, is a desktop built for today's business environment of office productivity and cloud-based apps. Everything works faster and easier with the latest storage technologies, up to AMD Ryzen 5 processor, a self-help software tool, and plenty of USB ports for connecting office peripherals and charging mobile devices.



honeycombed air vents



## Key Specs

- up to AMD Ryzen 5 processor
- optional NVIDIA GeForce GT 730 2GB graphics
- Powered by Windows 10 Pro

# ThinkCentre M720s

Users can open heavy files quickly and easily with the Gen 8 Intel Core™ processor and integrated Intel HD graphics. The space-saving vertical mount options allow the M720s to fit anywhere—on a bookshelf or under the table, for a clutter-free desk.



convenient front-mounted ports

## Key Specs

- up to 9th Gen Intel Core i9 processor
- optional NVIDIA GeForce GT 730 or AMD Radeon 520 graphics
- Powered by Windows 10 Pro

# ThinkCentre M720t

For demanding users who require a high-performance machine for intense tasks, this device comes with Gen 8 Intel Core™ Processor, integrated Intel HD graphics, M.2 PCIe SSD and up to 64GB memory that makes multitasking effortless.



connectivity & expansion options



## Key Specs

- up to 9th Gen Intel Core i9 processor
- optional NVIDIA GeForce GT 730 or AMD Radeon 520 or RX 550X graphics
- Powered by Windows 10 Pro

# ThinkCentre M725s

From basic admin to extensive productivity tasks, this product can be configured to meet a wide variety of user expectations, whilst reducing the need for bulky desktops. The depth of this device has been reduced, saving workspace and enabling more space for cable routing at the rear of the device. Subjected to more than 100 performance and reliability tests, it has unique features like optional dust filters and a cable lock to secure peripherals.



footprint reduced by 25%



## Key Specs

- up to AMD Ryzen 7 Pro processor
- optional NVIDIA GeForce GT 730 2GB graphics
- Powered by Windows 10 Pro

# ThinkCentre M75s Gen 2

Looking for a versatile device to support existing or new desk workers in your company? This compact, space-saving desktop can be configured to meet a wide variety of user expectations - from basic admin use to extensive productivity tasks. It comes with thoughtful features like Smart Power-On to which enables the PC to be started via a keyboard shortcut instead of reaching for the power button.



reduced depth and width

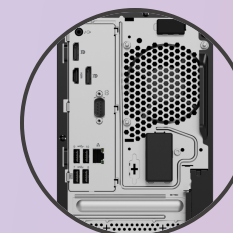


## Key Specs

- Up to AMD Ryzen 9 Pro processor
- Optional AMD Radeon 520 2GB graphics
- Powered by Windows 11 Pro

# ThinkCentre M75t Gen 2

Packed with the latest security and connectivity features demanded by businesses today, this powerful desktop tower also comes with the added advantage of easy upgradability over time. It is powered by AMD Ryzen 7 processors to accelerate business productivity. High-speed M.2 SSD storage and support for up to 3 independent displays allows office workers to multitask with ease. Plus, a USB-C port on the front panel enables quick and convenient data sharing.



an array of ports



## Key Specs

- Up to AMD Ryzen 9 Pro processor
- AMD Radeon 520 graphics in processor
- Powered by Windows 11 Pro



## Modular All-In-Ones

# ThinkCentre Tiny-In-One 24 Gen 4

Can be paired with any ThinkCentre Tiny desktop (including models with 65W CPU) to build a 23.8" modular all-in-one in less than a minute – no tools required. Integrated 1080p rotatable camera and mic support web conferencing, and there's also an optional IR camera or optional touchscreen.



2x 2W stereo speakers



## Key Specs

- optional touchscreen
- Rotatable 1080p camera

## Regular All-in-Ones

# Lenovo V30a 22iL AIO

With its sleek design, near-borderless display and reliable performance, this 21.5" all-in-one is well-suited for use by both front-office staff and back-office teams of any modern business. It is powered by the latest 10th Gen Intel processors and packs in several security features. The FHD anti-glare display with wide viewing angles and low blue light output option is comfortable to work on, even for extended hours. 6x conveniently-placed USB ports enable users to connect essential peripherals.



easy-access side ports



## Key Specs

- up to 10th Gen Intel Core i5 processor
- 21.5" Full HD (1920x1080) screen, IPS, 1000:1 contrast ratio, 250 nits
- Powered by Windows 10 Pro

## Regular All-in-Ones

# Lenovo V30a 22IML

With its sleek design, near-borderless display and reliable performance, this 21.5" all-in-one is well-suited for use by both front-office staff and back-office teams of any modern business. It is powered by the latest 10th Gen Intel processors and packs in several security features. The FHD anti-glare display with wide viewing angles and low blue light output option is comfortable to work on, even for extended hours. 6x conveniently-placed USB ports enable users to connect essential peripherals.



easy accessible side ports



## Key Specs

- up to 10th Gen Intel Core i5 processor
- 21.5" Full HD (1920x1080) screen, IPS, 1000:1 contrast ratio, 250 nits
- Powered by Windows 10 Pro

## Regular All-in-Ones

# Lenovo V30a 24 IML

This 23.8" all-in-one, with up to 10th Gen Intel® Core processors, will modernize any space with its sleek design and anodized aluminum stand. It includes a low blue-light mode which reduces eye fatigue, and an optional camera with privacy cover. It supports both Amazon Alexa and Microsoft Cortana voice assistants, enabling busy users to interact hands-free with the device, for example to look up information, or have emails read aloud.



sleek & modern design



## Key Specs

- up to 10th Gen Intel Core i5 processor
- 23.8" Full HD (1920x1080) screen, IPS, 1000:1 contrast ratio
- Powered by Windows 10 Pro

## Regular All-in-Ones

# Lenovo V30a 24IIL

This 23.8" all-in-one, with up to 10th Gen Intel® Core processors, will modernize any space with its sleek design and anodized aluminum stand. It includes a low blue-light mode which reduces eye fatigue, and an optional camera with privacy cover. It supports both Amazon Alexa and Microsoft Cortana voice assistants, enabling busy users to interact hands-free with the device, for example to look up information, or have emails read aloud.



sleek & modern design



## Key Specs

- up to 10th Gen Intel Core i5 processor
- 23.8" Full HD (1920x1080) screen, IPS, 1000:1 contrast ratio
- Powered by Windows 10 Pro

## Regular All-in-Ones

# Lenovo V50a 24IMB

Businesses looking to modernize their desktop fleet can opt for this sleek and stylish all-in-one PC. The 23.8" FHD anti-glare display with 92% screen-to-body ratio and low blue light output allows content creators, admin teams and other users to work long hours without strain. It comes with a super slim wedge-shaped stand for better stability and a cleaner look. The screen can be rotated 90° and tilted up by up to 30° to ensure the perfect angle for comfortable use.



Easy accessible ports



## Key Specs

- up to 10th Gen Intel Core i7 processor
- 23.8" Full HD (1920x1080) screen, IPS, 1000:1 contrast ratio
- Powered by Windows 10 Pro

## Regular All-in-Ones

# Lenovo V540-24IWL AIO

This 23.8" all-in-one will modernize any space with its sleek design. It includes thoughtful features that enhance user-comfort and productivity, including a low blue-light mode which reduces eye fatigue, and a Skype-certified camera with privacy cover. It supports both Amazon Alexa and Microsoft Cortana voice assistants, enabling busy users to interact hands-free with the device, for example to look up information, or have emails read aloud.



fully adjustable  
screen



## Key Specs

- up to 8th Gen Intel Core i5 processor
- 23.8" Full HD (1920x1080) screen, IPS, 1000:1 contrast ratio
- Powered by Windows 10 Pro



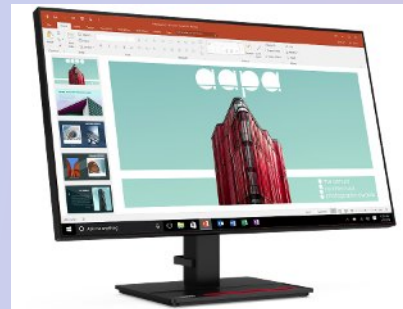
## ThinkVision T24t



### Key Specs

- ▶ 23.8-inch IPS panel display with 1920 x 1080 resolution, anti-glare and 3-side NearEdgeless screen
- ▶ 10-point touch screen that has 2,880 touch sensors to register every input
- ▶ ThinkColour Software makes adjusting the screen's settings effortless, efficient and fast.

## ThinkVision P24q-20



### Key Specs

- ▶ 23.8" QHD (2560x1440) monitor with 99% sRGB colour gamut
- ▶ 1x HDMI, 1x DisplayPort (in), 1x DisplayPort (out), 4x USB3.1, 1x USB 3.1 Type-B upstream, audio out
- ▶ Lift, Tilt, Pivot, Swivel stand for viewing comfort. Integrated smartphone holder in base.


# Smart Devices

Smart office devices that help professionals to be more collaborative and productive. Find flexibility across platforms and room sizes so you can redefine your meeting space.


## Meeting Room

Optimized Meeting Room Solutions enabling businesses to connect teams and ideas from wherever they are located, powering better collaboration and productivity.

ThinkSmart View



ThinkSmart Series



## Meeting Room

# Google Meet Series One Room Kits

Keep conversations and ideas flowing in this new room kit that redefines today's collaboration experience. It's ideal for organizations using G suite and Google Meet for communication and has unique features like onboard AI and enterprise-grade components. The cost-effective kit comprises all components required for optimum collaboration, including a smart camera, audio bar, and cables. Available in three different sizes – small, medium, and large, it's designed to fit meeting rooms of all sizes and easy to manage and install.



Small room kit

## Key Specs

- Speaker: 20W RMS power 80Hz-24kHz frequency response; Microphone: 8 element, linear beamforming array 100Hz-24kHz pickup
- Chrome OS

# ThinkSmart Core for Zoom

Lenovo ThinkSmart Core Kits make it easy and cost-effective for modern companies to incorporate smarter collaboration technology into meeting rooms of all sizes. These purpose-built, modular room kit solutions start with ThinkSmart Core, a compute that is powered by 11th Gen Intel® Core™ processors and certified and preloaded with Zoom Rooms to help employees connect, share, and collaborate seamlessly and securely from wherever they may be working.



Convenient connectivity options

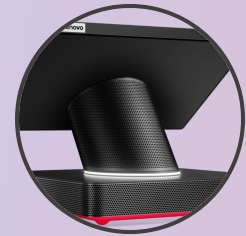


## Key Specs

- 10.1" (1280x800), 40nits, 16:10, Anti-Glare, 10-point touch
- ThinkSmart Bar -4x speakers, Power output 20+20W, 250 Hz to 20 KHz, up to 97dB
- Windows 11 IoT Enterprise GAC 64/Windows 10 IoT Enterprise SAC 64

# ThinkSmart Hub 500 for Zoom

A powerful tool for helping teams large and small to connect, share, and collaborate. It offers smarter technology including richer audio with full duplex speakers and dual array mics integrated in an even smaller, sleeker device. The device is super easy to manage using Lenovo's custom-built ThinkSmart Manager software along with the more personalized approach of Lenovo's optional Smart Office Professional Services.



dual 5W stereo speakers



## Key Specs

- 11.6" Full HD (1920x1080) touchscreen, 800:1 contrast ratio
- Stereo speakers, 5W x2, Dual omnidirectional microphone for 360° audio capture
- Windows 10 IoT Enterprise

# ThinkSmart Hub for Zoom

This next-generation meeting room system facilitates superior collaboration and teamwork from anywhere around the globe. Built on the Microsoft Teams Room platform, it enables employees to chat in real time. It comes with strong features like the 8th generation Intel Core i5 Processor for a seamless experience; a compact design and a completely redesigned clutter-reducing cable management system give the tabletop an organized look and feel.



Touchscreen  
rotatable display



## Key Specs

- 10.1" FHD (1920x1200) TDDI WVA 16:10, 320nits, 60% NTSC, 10-point touch
- High Definition (HD) Audio, 4 premium tuned speakers, 3W x4, 4 omnidirectional microphones for 360° audio capture
- Windows 11 IoT      Windows 10 IoT      Windows 11 IoT      Windows 10 IoT  
Enterprise for      Enterprise for      Enterprise GAC 64 (for      Enterprise SAC 64 (for  
Collaboration GAC      Collaboration SAC      Zoom Rooms models)      Zoom Rooms models)  
64      64



## ThinkSmart Cam

### Key Specs

- Supports resolution up to 4K at 30fps and 1080p at 60fps
- Gives 100° Horizontal/68° Vertical/125° Diagonal fields of view
- Can be used as a standalone camera or mounted on wall or TV



## Lenovo Essential Compact Wireless ...



### Key Specs

- Compact and easy to carry, weighs just under 50g (1.76oz)
- Ergonomic and ambidextrous design with 3 buttons
- Highly durable design, tested to last up to 8 million clicks

## Lenovo Kensington MicroSaver Cable...



### Key Specs

- Cut-resistant cable lock to protect against device theft; 5ft/1.5m cable anchors to desk, table or any fixed structure
- Tamper-resistant, disk-style lock provides near-impenetrable theft protection, but still allows users to pivot and rotate devices
- Fits a wide range of devices and docking solutions based on the Kensington slot design. Dual head locks available to secure 2 devices to one cable

# Lenovo 45W USB-C AC Portable Adapter



## Enhance charging experience

Maximize your mobility with this charger that packs in efficiency and productivity in a travel-friendly size. Weighing 92g, it is the perfect solution to charge all the devices while you're on the move.

## Multiple device compatibility

Compatible with all USB-C devices, including laptops, mobile phones, and tablets, this compact adapter serves as an all-in-one solution, creating a clutter-free workspace for enhanced productivity.

## Stable and reliable power supply

The built-in smart clip provides robust protection against overheating, power surges, over-voltage, and short circuits. It is powerful enough to support 45W charging, ensuring your technical equipment remains safe.

## Specifications

**Compatibility:** Compatible with 45W computer systems and qualified 65W ( with limited charging functionality) computer systems

**AC Input:** 100V–240V ~1.2A; 50 Hz - 60 Hz DC

**DC Output:** 5V 3A/9V 3A/15V 3A/20V 2.25A

**Cable Length:** 1 m

**Unpacked Dimensions:** Width: 93 mm (3.66") Depth: 40 mm (1.57") Height: 28.5 mm (1.12")

**Packed Dimensions:** Width: 207 mm (8.14") Depth: 122 mm (4.80") Height: 75 mm (2.95")

**Weight:** 0.254 kg (0.56 lbs)

## Part Number

4X20V07881

# Lenovo 65W USB-C AC Travel Adapter



## More Space, More Freedom

Designed to make business travel light and easy, the Lenovo 65W USB-C AC Travel Adapter takes up only 90 cubic centimeters of space and weighs just 117g. That's 44% smaller and 50% lighter than our previous generation of chargers,

## More Speed, More Ease

This 65W PD 3.0 certified adapter delivers enough power to charge almost any USB-C device rapidly. Better yet, it's reversible Type-C connector allows it to be plugged into any socket regardless of how it's held or inserted.

## More Adapters, More Locations

4 Interchangeable plugs for international business trips (US, EU, AU, UK) with a simple twist-and-lock mechanism.

## Specifications

**AC Input :** 100V - 240V ~1.7A; 50 Hz - 60 Hz

**DC Output :** 5V/3A, 9V/3A, 15V/3A, 20V/3.25A

**Connection :** USB-C supporting Smartphones, Laptops

**Plugs :** 4 wall mount plugs

**Dimensions:** Width: 59.7mm (2.35") Depth: 42.5mm (1.67") Height: 30mm (1.18")

**Weight:** 117g (0.26lb) , US Plug: 13g (0.029lb)

**Cable length :** 1.8m (70.7")

## Part Number

40AW0065WW GOA6N065WW 40AW0065EU-(EU plug)

# Lenovo Powered USB-C Travel Hub



## One cable, six options

Easily connects to an external 4K or 1080p display with HDMI or VGA, supports wired RJ45 network, two USB-A devices and USB-C power pass-through – all through one USB-C cable.

## Understated design, travel-ready

Makes travel light and easy, and packs unobtrusively into a bag. Ready for everything, the travel hub can provides power to a USB-C laptop with an additional 45W or 65W USB-C power adapter (sold seperately).

## Plug and play functionality

Easy to use and driver-ready, the Hub works with any USB-C device. Especially compatible with ThinkPad systems, delivering enterprise-class features such as MAC address pass-through, Wake-on-LAN and PXE boot.

## Specifications

**Connectivity:** USB-C cable

### Video Ports:

1 x HDMI  
1 x VGA

**Maximum Number of Displays:** 1

**Maximum Video Output:** 1 x 4K @ 60 Hz

**Dimensions:** Width: 130mm (5.12") Depth: 53mm (2.09") Height: 17mm (0.67")

**Weight:** Starting at 116g (0.25lbs)

**Colour:** Iron Grey

### USB Ports:

1 x USB-A 3.0<sup>1</sup>  
1 x USB-A 2.0  
1 x USB-C power pass-through

**Ethernet:** Gigabit

**Audio:** N/A

**Power Consumption:** 15W; could be powered by a system without additional AC adapter

**USB-C Laptop Charging:** with 45W & 65W USB-C power adapter

**PXE Boot:** Selected ThinkPad laptops

**MAC Address Pass-through:** Selected ThinkPad laptops

**Wake-on-LAN:** Selected ThinkPad laptops

## Part Number

4X90S92381



# Lenovo USB-C to 4 Port USB-A Hub



## Plug-and-play design

The Lenovo USB-C to 4 Port USB-A Hub works right out of the box so you can get to work right away. There's no need to download any drivers.

## Fast and versatile

A wide range of legacy USB devices can be connected via the 4x USB3.1 Gen 1 ports on the expansion hub including printers, scanners, webcams and other peripherals. It also enables high-speed data transfers.

## Easy to carry

Weighing only 42 grams, it's small and easy to fit in your pocket or a carry case compartment - so it is always with you when needed.

## Specifications

**Input Type:** USB-C Male

**Output Type:** 4x Female USB-A Outputs (USB 3.1 Gen 1), up to 5 Gbps

**Product dimensions:**

(mm) : 95 x 37 x 12

(inches) : 3.7" x 1.5" x 0.5"

**Cable length:** 138mm (5.43")

**Weight:** 42g (0.092lbs)

## Part Number

4X90X21427

# Lenovo USB-C to VGA Adapter



## One connection simplicity

This adapter has been designed to mirror a user's primary display or to extend it and expand their virtual workspace without the installation of additional drivers.

## Flexible user-experience

Connect to any display, projector or TV featuring VGA input. USB-C to VGA conversion delivers high-quality video to your display, projector or TV with resolutions up to 1920x1200.

## Lightweight design

Compact, portable build featuring familiar sleek design to complement other Lenovo products.

## Specifications

**Video output:** supports extended mode, mirror mode

**Max power consumption:** 5V +/- 5%, 1.5A

**Bandwidth supported:** up to 5.4Gbit/s

### Display resolutions supported:

WUXGA: 1920x1200, 60 Hz, 18 bpp, 193 MHz pixel clock rate

WUXGA: 1920x1200, 60 Hz (reduced blanking), 24 bpp, 154 MHz pixel clock rate

UXGA: 1600x1200, 60 Hz, 162 MHz pixel clock rate

SXGA: 1280x1024, 60 Hz, 108 MHz pixel clock rate

XGA: 1024x768, 60 Hz, 65 MHz pixel clock rate

SVGA: 800x600, 60 Hz, 40 MHz pixel clock rate

VGA: 640x480, 60 Hz, 25 MHz pixel clock rate

**Weight:** 45.3g (0.1lbs)

**Dimensions:** Width: 27mm (1.06"), Depth: 222mm (8.74"), Height: 12mm (0.47")

## Part Number

GX90M44578

# Protective Case for 300e & 500e Gen 2



## 2-in-1 design

Fitted with a convertible hinge, all cases support both laptop and tablet modes (300e and 500e). Implementation is quick and easy with intuitive snap-in installation feature. Cases are suitable for the classroom or industrial and outdoor use.

## Protection against damage

Features reinforced edges and corner bumpers for protection against any accidental damage, dents and scratches. It is easy to clean too.

## Classroom ready

Devices function perfectly with full access to keyboards and ports during use. For schools that use charging carts, the cases have been designed to fit inside most models. The rear of the case has a clear window to facilitate asset tagging.

## Specifications

### Part Number : 4X40V09688

Fits Up To: 100e Chrome (Intel processor) and 100e Windows  
Color: Black/Transparent  
Weight: 373.2g (0.82 lbs)

### Part Number : 4X40V09689

Fits Up To: 100e Chrome (MediaTek processor)  
Color: Black/Transparent  
Weight: 380.4g (0.84 lbs)

### Part Number : 4X40V09690

Fits Up To: 300e Chrome (MediaTek processor) and 300e Windows  
Color: Black/Transparent  
Weight: 345g (0.76 lbs)

### Part Number : 4X40V09691

Fits Up To: 300e Chrome (Intel processor) and 500e Chrome  
Color: Black/Transparent  
Weight: 354.8g (0.78 lbs)

## Part Number

100e: 4X40V09688 / 4X40V09689 || 300e: 4X40V09690 / 4X40V09691

# Lenovo Business Casual 17" Backpack



## Multi-compartment design

This backpack features a multi-compartment design so you can easily organize and separate your laptop from other devices and essentials, and enjoy quick access on the fly.

## Unbeatable durability

Built from rip-stop polyester and sturdy alloyed rings and buckles, the backpack is capable of withstanding challenging conditions and preventing workplace disasters.

## Travel-ready construction

Adjustable shoulder straps, padded handles, and integrated charging port make travel easier than ever.

## Specifications

**Compatibility:** Supports ThinkPad laptops up to 17"

**Color:** Charcoal Grey

### Design feature:

Multi-compartment design

Easily organize and separate laptop from other essentials

Integrated charging port with charging capabilities

**Durability:** Made from rip-stop polyester and sturdy alloyed rings and buckles. Water-resistant fabric.

**Dimensions:** Width: 335mm (13.19"), Depth: 185mm (7.28"), Height: 500mm (19.69")

**Weight:** 840g (1.85lbs)

## Part Number

4X40X54260



# Lenovo Business Casual 15.6" Topload



## The ultimate organizer

This top-loader features a multi-compartment design so you can easily organize and separate your laptop from other devices and essentials and enjoy speedy access to things that are near and dear to you.

## Versatility, Redefined

Built from rip-stop polyester and sturdy alloyed rings and buckles, the top-loader is durable enough to withstand challenging weather conditions. Serves as a stylish yet compact bag for daily commuters, students and travellers.

## Travel-ready construction

Padded panels and a reserved weather repellent charging port makes productivity on-the-go easier than ever. Plus, you have 2 ways - handles and shoulder straps to carry the top-loader, no matter where you're heading.

## Specifications

**Compatibility:** Supports ThinkPad laptops up to 15.6"

**Color:** Charcoal Grey

### Design Feature:

Multi-compartment design

Easily organize and separate laptop from other essentials

Integrated charging port with charging capabilities

**Durability:** Made from rip-stop polyester and sturdy alloyed rings and buckles. Water-resistant fabric.

**Dimensions:** Width: 400mm (15.75"), Depth: 80mm (3.15"), Height: 285mm (11.22")

**Weight:** 560g (1.23lbs)

## Part Number

4X40X54259

# Lenovo 15.6-inch Laptop Casual Backpack B210 Grey



## Grab and go organization

Multiple pockets mean you can access everything you need for work, travel or every day. The integrated laptop compartment comfortably fits most laptops up to 15.6" while the internal quick-access pockets holds mobiles, business cards and other daily utilities.

## It's all in the details

Crafted with snow yarn polyester, this backpack is lighter, less bulky and makes carrying your things as comfortable as possible. The water-resistant finish seals your laptop and accessories from moisture or any wear and tear.

## Your perfect companion

With a modern and minimal design, this backpack has plenty of space for everything. It can easily fit a range of devices including Yoga 720-15, Ideapad 520-15 and comes in 4 understated colours to choose from.

## Specifications

**Compatibility:** Supports laptops up to 15.6"

**Material:** Polyester

### Design feature:

Multi-compartment design

Easily organize and separate laptop from other essentials

**Durability:** Made water-repellent snow yarn polyester.

**Dimensions:** Width: 150mm (5.9"), Depth: 455mm (17.9"), Height: 340mm (13.3")

**Weight:** 453 g (0.90 lbs)

## Part Number

GX40Q17225

# ThinkPad X1 Leather Sleeve



## Slim-line storage

Thin enough to fit inside another bag, this sleeve provides room for a laptop and extra easy-access storage for meeting essentials.

## Timeless luxury

Craftsmanship quality, classic black leather exterior, and soft-touch gray interior provide unparalleled elegance while protecting Lenovo notebooks against scratches, dents, and bumps.

## Inspired design

A dedicated slot keeps the user's pen or stylus always within reach, making it easy to take notes or draw on-the-go.

## Specifications

**Compatibility :** Sized to fit the ThinkPad X1 Carbon (Gen 6, 7 & 8) and ThinkPad X1 Yoga (Gen 4 & 5), may also fit other laptops 14" and under

**Dimensions :** Height: 370mm (14.57") Width: 250mm (9.84") Depth: 1.8mm (0.07")

**Weight :** 0.43kg (0.95lb)

**Color :** Exterior Black, Interior Gray

**Materials :** Exterior Genuine Leather, Interior Microfiber Lining

**Special Features :** Back slip pocket for storage of accessories; elastic storage loop for pen or stylus

## Part Number

4X40U97972

# ThinkPad Essential Backpack



## Exclusive to ThinkPad

This functional backpack is compatible with ThinkPad notebooks up to 15.6". Red accent zipper-pull complements ThinkPad styling.

## Limited lifetime warranty

Business travellers can rest assured that this durable backpack will stand the test of time, with included limited lifetime warranty.

## A commuter's best friend

A separate, padded compartment has been designed to securely hold a ThinkPad, and protect it from damage in transit. With additional features including storage pockets and a side water bottle holder, it's the perfect accessory for on-the-go professionals.

## Specifications

**Color:** Black

**Compatibility:** ThinkPad notebook computers up to 15.6" wide

**Package Type:** Polybag

**Outside Fabric Material:** 100% Polyester

**Padded Notebook Compartment:** Yes

**Dimensions:** Width: 114.3 (4.5) Depth: 457.2 (18.0) Height: 342.9mm (13.5")

**Weight:** 0.7kg (1.5lbs)

## Part Number

4X40E77329

# ThinkPad 15.6" Essential Messenger



## Lightweight. Portable.

Designed for mobility, the messenger holds essentials close to the body, making it ideal for use on bicycles or public transit.

## Easy access

Unlocking the secure buckle closure and flipping open the front flap reveals a spacious interior that offers visibility and easy access to all stored essentials.

## Smart. Casual.

Professional workers, commuters, and students will appreciate the messenger's polished yet casual styling, which make it versatile for work and beyond.

## Specifications

**Device Compatibility:** Supports Lenovo and ThinkPad laptops up to 15.6"

**Secure Storage:** Front flap with buckle closure for convenient access and extra protection

**Front/Rear Pockets:** Zippered front pocket and a rear pocket with Velcro closure provide additional storage space

### Interior Organization:

Main compartment includes padded laptop sleeve with secure webbing strap  
Large pocket for books or notepads  
Zippered pocket for smaller accessories

**Color:** Black

**Material:** Ripstop and matte nylons (100% polyester)

**Dimensions:** Width: 413mm (16.25"), Depth: 80mm (3.5"), Height: 305mm (12")

**Weight:** 0.75kg (1.66lbs)

## Part Number

4X40Y95215



# ThinkPad 15.6" Basic Topload



## Durable. Minimalistic.

Built to handle the rigours of everyday use with minimal openings and water-resistant material that help protect the stored device and accessories against the elements.

## Functional. Cost-Effective.

Every detail of this bag was designed with purpose. Like the designated slip pocket to securely hold the laptop, spacious area for other items, front zippered quick-stash pocket, and luggage strap on the back.

## Lightweight. Stylish.

Travel light and in style. With sleek, clean lines that present a professional outlook, this topload has plenty of space to hold everyday work essentials without adding bulk or weight.

## Specifications

**Device Compatibility:** Supports Lenovo and ThinkPad laptops up to 15.6"

**Secure Storage:** Designated pockets to carry and protect your laptop and other essentials

### Functional Features:

Quick-stash pocket with front zipper  
Convenient luggage strap

**Durability & Weather-resistance:** Made of lightweight materials that offer reliable protection against the elements

**Color:** Black

**Material:** Nylon (100% Polyester)

**Dimensions:** Width: 420mm (16.54"), Depth: 51 mm (2.01"), Height: 293mm (11.54")

**Weight:** 0.31kg (0.68lbs)

## Part Number

4X40Y95214

# Lenovo Dual Platform Notebook & Monitor Stand



## Ergonomic viewing

Place a monitor on the top platform to support easy setup and better ergonomics with a higher viewing angle.

## Cable and Accessories Management

Rear cable management loops and concealed cable management in the bottom of the base help to keep the workspace tidy. Lower platform features retaining brackets for ThinkPad Docking Station (2013) series, enabling a tidy and compact work space.

## Integrates with ThinkCentre Tiny

Underside of upper platform has a VESA mount for adding a Tiny PC mounting bracket, enabling the PC to be discreetly fixed in place, leaving the bottom shelf for storage or peripherals.

## Specifications

**Notebooks Supported:** Supports any laptop up to 15.6"

**Docks Supported:** Retaining brackets for ThinkPad Docking Station (2013) series. Universal USB docks may also be placed on the lower platform (without using retaining brackets).

**Monitors Supported :** Up to 16kg (35lbs)

**VESA Compatibility:** Underside of upper platform has VESA mount for adding Tiny PC mounting bracket

**Cable Management Feature:** Rear cable management loop + concealed cable management in the bottom of the base

## Part Number

4XF0L37598

# ThinkCentre Nano Monitor Clamp



## Optimize desk space

Secures a ThinkCentre Nano to the stand of selected ThinkVision monitors to create a cleaner working environment and a better user experience.

## Specifications

**Product Dimensions :** Width: 67mm (2.65"), Length: 82.5mm (3.25"), Height: 67mm (2.64")

**Product Weight :** 222 g (7.83 oz)

**Supported PC Weight :** 5 kg (11.02lbs)

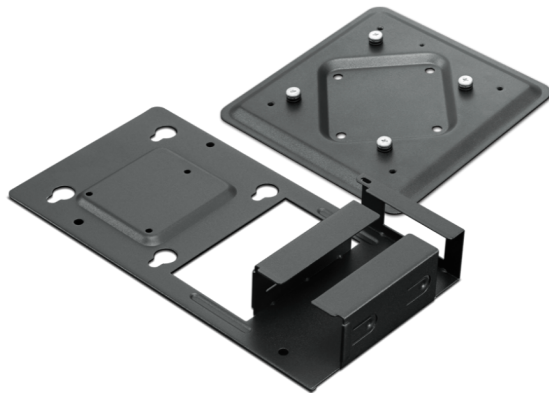
**Color :** Black

**Compatibility :** with ThinkCentre Nano & Nano IoT PCs and ThinkVision T-Series and P-Series monitors (except P32u and P44w)

## Part Number

4XF0V81633

# ThinkCentre Nano Power Cage Kit



## Powering PCs

Effortlessly integrate a power adaptor with a Nano or Nano IoT PC. Simply secure the power adapter alongside the Nano or Nano IoT PC to make cable routing organised and hassle-free.

## Flexible design

This kit is also VESA compatible, enabling users to mount the device to a wall, on top of a desk or any other compatible surface for added flexibility

## Adapter compatibility

Power slot has been tailored to fit standard 65W and 90W Lenovo power adapters that are smaller than 105x44x28mm (4.1x1.7x1.1").

## Specifications

**Dimensions :** Depth: 150mm (5.90"), Length: 227mm (8.94"), Height: 43mm (1.70")

**Weight :** 441 g (0.97lbs)

**Height Lock :** via screw connection

**Physical Security :** via screw connection

**Supported weight Range :** up to 5 kg (11.02 lbs)

**Tilt Lock :** via screw connection

## Part Number

4XF0V81631

# ThinkCentre Nano TIO Cube



## Create an integrated PC and display

Allows you to configure an all-in-one PC using a ThinkCentre Nano. Simply insert the Nano into the TIO Cube and then slide them into the dedicated bay at the rear of a ThinkCentre Tiny-in-One display. This solution works with any Tiny-in-One in the portfolio, including 22", 24", and 27" screen sizes.

## Mount behind any VESA-compatible display

Use in combination with the ThinkCentre Tiny VESA Mount II (sold separately) to install a Nano PC behind any VESA-compatible monitor or TV.

## Specifications

**Product Max Dimensions :** Width: 182mm (7.17"), Length: 179mm (7.04"), Height: 36.5mm (1.44")

**Product Weight :** 200 g (7.05 oz)

**Connectivity :** 2x USB-A

**Supported PC Weight :** 5 kg (11.02 lbs)

**Color :** Black

**Compatibility :** with ThinkCentre Nano fan model PCs

## Part Number

4XF0V81632



# ThinkCentre Nano VESA Mount



## Conveniently versatile

Features the universal VESA mount configuration, enabling users to attach the ThinkCentre Nano to any VESA-compatible device, or to mount it on a wall, ceiling or under the desk to save space or for specialist use-cases.

## Easy to deploy

Designed exclusively for ThinkCentre Nano and ThinkCentre Nano IoT PCs. Installation is quick and simple, using a standard cross screwdriver.

## Specifications

**Dimensions:** Depth: 150mm (5.91"), Length: 150mm (5.91"), Height: 13mm (0.51")

**Weight:** 312g (0.69lbs)

**Height Lock:** via screw connection

**Physical Security:** via screw connection

**Supported weight Range:** up to 5kg (11.02lbs)

**Tilt Lock:** via screw connection

## Part Number

4XF0V81630

# ThinkCentre Tiny Sandwich Kit II



## Secure, space-saving solution

The Tiny Sandwich kit enables more desktop and floor space while providing a secure solution to protect your Tiny PC.

## Reliable and easy to use

Compact design constructed from high-grade steel; comes with screws that allows anybody to mount it with ease

## Full access to ports

The open architecture provides easy access to various ports and control buttons of the ThinkCentre Tiny PC.

## Specifications

**Color:** Black

**Material:** Made from high-grade steel

**Convenience:** Easy access ports

**Weight:** 927g (2.04 lbs)

## Part Number

4XH0N04098

# ThinkCentre Tiny Storage Unit



Lenovo ThinkCentre Tiny Storage Unit

## Easy deployment

Includes a USB cable which connects to a ThinkCentre Tiny VESA mount and fixes the Storage Unit securely onto the Tiny PC. Just takes a minute to install.

## Performance boosting

Enables users to enhance device capabilities by adding a DVD burner, DVD ROM or 2nd HDD (all sold separately) to any ThinkCentre Tiny PC

## Specifications

**Host interface:** USB2.0 high speed

**Data buffer capacity:** 1.0MB

**Dimensions:** Width: 186.5mm (7.34"), Length: 183mm (7.2"), Height: 64mm (2.52")

**Weight:** 570g (1.26lb)

## Part Number

0B47375

# ThinkCentre Tiny Under Desk Mount Bracket



## Optimized use of space

Save desk and floor space with the ThinkCentre Tiny Under Desk Mount Bracket, made from high-grade steel for optimal protection. It is easy to install under a desk or any VESA-compatible furniture or surface, using just four screws. Also requires ThinkCentre Tiny VESA Mount II for mounting of the Tiny PC to the Under Desk Mount Bracket.

## Easy access to controls

The open architecture provides easy access to media drives and control buttons of the ThinkCentre Tiny PC for a seamless user experience. Also provides space for a ThinkCentre Tiny Storage Unit or other external storage/DVD drive.

## Specifications

**Compatible Systems :** ThinkCentre Tiny all generations M7, M8, M9 series

**Color :** Black

**Dimensions :** Width: 199mm (7.83"), Depth: 105mm (4.13"), Height: 228.9mm (9.02")

**Packed Weight :** 0.757kg (1.67lbs)

## Part Number

0B47097

# ThinkCentre Tiny VESA Mount II



## Clutter-free

Mounting option designed to house a Tiny PC. The universal VESA mount configuration allows attachment to anything that is VESA compatible - behind a monitor or mounted on a wall - for a clean, clutter-free set-up.

## Expand capabilities

This mount is necessary to enable other Tiny accessories such as ThinkCentre Tiny Storage Unit, ThinkCentre L-Bracket Mounting Kit and ThinkCentre Tiny Under Desk Mount Bracket.

## Specifications

**Compatible Systems :** All generations of ThinkCentre Tiny M6, M7, M8, M9 series

**Configuration type :** Universal VESA compatible

**Packed Weight :** 487g (1.07lbs)

## Part Number

4XF0N03161



# Lenovo Essential FHD Webcam



### Just Like The Real Thing

The innovative FHD 1080P camera delivers perfect high-resolution video during video calls; set the scene with its ultra-wide 95° lens and 4X digital zoom while 2x built-in mics capture crisp stereo audio from all directions.

### Easy Plug-and-Play Setup

Simply unpack and unfold the camera when you want to do a call, and plug the USB 2.0 cable into any Windows or Mac device. No drivers necessary.

### Mount Anywhere & Everywhere

With a 1.8 metre cable, tripod support, and a flexible mounting mechanism, users can attach this webcam almost anywhere. Even difficult angles work, thanks to the wide-angle lens, tilt controls, and 360° rotation support. Just mount it, tilt it, and open the privacy shutter.

## Specifications

**Supported OS :** Windows 7, Windows 8 or Windows 10, Mac OS X 10.14 or Higher, Ubuntu 20.04, Chromebook 85.0.4181.3

**Resolution :** 1920 x 1080 (MJPG), @ 30 Frame Rate (default)

**Zoom :** Supports Digital 4X Zoom

**Focus :** Fixed Focus

**Field of View :** 95°

**Rating :** 5V 150mA

**Dimension :** Width: 90mm (3.54"); Depth: 46mm (1.81"); Height: 62mm (2.48")

**Weight :** Starting at 130 g (0.28 lb)

**Color :** Black

**Clip :** Tripod-ready Universal Clip fits Laptops, Desktop and other LCD Monitors

**Connectivity :** USB 2.0

### LED

Colors : White, Green  
Brightness : 3 Lux

### Cable Length

1.8 m (5.9 ft)

## Part Number

4XC1B34802

# ThinkSmart Cam



## Optimized For Video Conference Collaboration

From home offices or huddle rooms to medium and large conference rooms, it captures everyone and everything thanks to its wide field of view. Its high resolution and frame rates—up to 4K at 30fps and 1080p at 60fps—eliminate lag and distortion.

## Built With Artificial Intelligence

An integrated VPU with AI Conference Meeting Functions (AI features are controlled via ThinkSmart Manager - available with the purchase of a ThinkSmart compute).

## Designed For Seamless Integration

From its compact, lightweight design to its certified compatibility with Microsoft Teams Rooms and Zoom Rooms, it fits seamlessly into any modern office environment. It can easily be set up as a standalone device or mounted to a wall or TV.

## Specifications

**Resolution :** USB 3.2 Gen 1 Cable: 4K at 30fps, 1080p at 60/30fps, 720p at 60/30fps, 360p at 60/30fps

USB 2.0 Cable: 1080p at 30fps, 720p at 30fps, 360p at 30fps

**Supported OS :** Windows 10

**Field of View :** 100° Horizontal/68° Vertical/125° Diagonal Field of View

**Dimension :** Length: 105mm; Depth: 60.5mm; Height: 36mm

**Color :** Black

**Connectivity :** USB3.2 Gen1 TypeC

**Power Input:** 2.5 W

## Part Number

4Y71C41660

# ThinkSmart Bar



## Outstanding Sound

Four built-in mics with 180-degree wide-angle coverage make for a truly immersive meeting room audio experience, while integrated DSP noise cancellation eliminates distracting echoes and background noises.

## Super Scalability

It has the speaker and mic range of 8.5m to accommodate a wide range of room sizes. Two additional satellite mics with 6m cable are available with purchase of X-Large room solution.

## Seamless Integration

Simply set up as a standalone device or mount to a wall or TV. Manageability is just as easy—simply activate and manage ThinkSmart Bar as a plug-and-play device using the ThinkSmart Manager console (available with the purchase of a ThinkSmart compute).

## Specifications

**Speakers:** Loudness up to 97dB, Power output 20+20W with 4 speaker units, Built-in DSP for echo and noise-cancellation, Speaker frequency range 250Hz to 20KHz

**Microphones:** 4x built-in mics with 180° coverage, Microphone frequency range 300Hz to 8KHz, Range up to 8.5m+ (1Mic pod is only available for X-Large room solution and beyond)

**Built-in Buttons:** Power, mute, Bluetooth, volume up/down

**Connectivity:** USB 2.0, USB-C connector, Bluetooth 5.0 (Supports Bluetooth connectivity via phone only. Does not support Bluetooth via PC.)

**Dimensions:** Width: 800mm (31.5")x Height: 55mm (2.2")x Depth: 90 mm (3.5")

**Weight:** 1.9 kg (4.2 lbs)

**Mounting:** Standalone (tabletop), Wall and TV mounting options

**Certification and Compatibility:** Microsoft Teams Rooms-certified, Zoom Rooms-compatible

## Part Number

11RTZ9ARUS

# ThinkPad Hybrid USB-C with USB-A Dock



## One dock fits all

This docking station enhances the performance of Lenovo USB-C notebooks and tablets using USB-C connection, as well as previous generation notebooks through its USB-C to USB-A adapter.

## Supports rich functionality

Supports dual 4K displays with DisplayPort and HDMI ports. A total of 6x downstream USB ports, including 1x USB-C and 3x USB 3.1 Gen 2 ports support fast data transfer to peripherals, and charging power.

## Simplify enterprise management

Onboard Gigabit Ethernet with manageability features such as PXE boot, Wake-on-LAN from sleep mode, and MAC address pass-through.

## Specifications

**Interface:** USB-C cable with USB-C to USB-A dongle

**Power :** ThinkPad 135W AC adapter (Slim tip)

**Power Delivery :** Yes

**Output Power :** 90W

### Video Ports :

2 x DisplayPort

2 x HDMI

Supports up to 2x 4K displays

**External Monitors supported:** up to 2

**Refresh Rate:** DisplayPort: 3840 x 2160 @ 60 Hz; HDMI: 3840 x 2160 @ 60 Hz; Bundle DisplayPort 1 & DisplayPort 2 to the monitor: 5120 x 2880 @ 60 Hz

### USB Ports :

3 x USB 3.1 Gen 2 (10 Gbps, 1 x always-on charging)

1 x USB-C (Gen 2, 5V / 3A power)

2 x USB 2.0

**Ethernet (RJ45) :** Gigabit Ethernet

**Audio Combo Jack :** Yes

**Dimension :** Width: 210 (8.27) Depth: 80.0 (3.15) Height: 30.0mm (1.18")

**Weight :** 480g (1.05lbs)

### Network Manageability :

PXE Boot

Wake-on-LAN

MAC address pass-through

## Part Number

40AF0135xx

# ThinkPad Universal Thunderbolt 4 Smart Dock



## One Cable For All Your Needs

The ThinkPad Universal Thunderbolt™ 4 Smart Dock adds 11+ productivity-enhancing ports to your PC in a single cable. With support for one 8K monitor or up to four 4K monitors, 40 Gbps data speeds via Thunderbolt™ 4, and 10 Gbps via USB-A, and rapid-charging for up to 100W laptops, you can drastically expand the potential of your workspace with ease.

## Universal Dock Compatibility

Get more longevity from your dock with the forward-thinking universal design of the ThinkPad Universal Thunderbolt™ 4 Smart Dock that supports Thunderbolt™ 3 and 4, USB 4™, USB-C, and extended compatibility with a wide range of brands and Multi-OS notebooks.

## Innovative Remote Management

Enter a new age of dock management with efficiency-enhancing innovations such as remote firmware updates without a PC connected, remote port management, data analytics reporting, diagnostic tools, and Microsoft Azure Sphere security solution that aim to streamline the workflow of IT managers and boosts their productivity.

## Specifications

### PERFORMANCE

**Solution:** Intel® Thunderbolt™ 4 Microsoft Azure Sphere

**Connectivity:** 0.7 m Thunderbolt™ 4 Cable

**Video Port:** 2x DisplayPort™ 1.4, 1x HDMI™ 2.1, 1x Thunderbolt™ 4

**USB Port:** 4 x USB-A 3.1 Gen 2 (10 Gbps, 1 x always-on charging), 1 x USB Type-C™ (10 Gbps, 5V/3A)

**Video Resolution:** Maximum 8K

**Number of Displays Maximum:** 4 x 4K or 1 x 8K

**Audio:** Stereo/Microphone Combo Max. Charging

### DESIGN

**Dimensions (L x M x H):** 220 x 80 x 30 (mm), 8.67" x 3.15" x 1.18" (inches)

**Weight Net Weight:** Starting at 0.5 kg (1.1 lbs)

**Kensington® Lock Slots:** 1x K-lock Slot, 1x NanoSaver Lock Slot

### CONNECTIVITY

**vPro™:** Yes

**Ethernet:** RJ45 (PXE Boot, WOL, MAC Address Pass-through Supported), WiFi

**Bluetooth®:** Yes

## Part Number

40B10135XX



# Lenovo Essential Wired Keyboard & Mouse



## Space-saving design

Sleek and stylish design that keeps the workspace clean and fit for purpose. Plug and play wired USB connection.

## Enhanced typing experience

Island-style keys and quiet key strokes deliver a polished, comfortable typing experience. The keyboard is protected from accidental spills by a waterproof membrane.

## Accuracy and control

A 1600 DPI optical sensor ensures precise cursor movement. Both keyboard and mouse complement the design of a ThinkCentre or ThinkPad system.

## Specifications

**Connection :** Plug and play wired USB connection

### KEYBOARD:

**Keyboard Layout:** 3-zone layout

**Form factor (key profile):** Low-profile island style keys

**LED indicators:** Caps lock and num lock LED indicators

**Function, media controls:** Yes

**Adjustable tilt legs:** Yes

**Durability:** Spill-resistant design

**Dimension:** Width: 424(16.70") Depth: 146 (5.75") Height:20mm (0.79")

**Weight:** 0.57 kg (1.26 lbs)

### MOUSE:

**Resolution:** Full-size 1600 dpi optical mouse

**Buttons:** 3

**Scrolling:** 2 way (up/down)

**Sensor:** Optical sensor

**Dimension:** Width: 111(4.37") Depth: 62 (2.44") Height:34mm (1.33")

**Weight:** 69 g (0.15 lbs)

**Color :** Black

**Cable Length:** Keyboard- 1.8mm (0.71"); Mouse- 1.8mm (0.71")

## Part Number

4X30I79883

# Lenovo Essential Compact Wireless Mouse



## Reliable

2.4GHz Nano USB receiver and up to 12 months battery life.

## Accuracy is everything

Seamlessly glide between tasks with 1000 DPI optical sensor navigation. Precise control with the intuitive scroll wheel and thoughtfully placed buttons.

## Designed for you

Whether you're left- or right-handed, it's comfortable to hold.

## Specifications

**Wireless Technology:** 2.4 GHz Wireless via nano USB

**Operating Distance:** >=10M

**Supported OS:** Windows 7, 8 and 10

**Sensor Technology:** Optical sensor

**Sensor Resolution:** 1000 DPI

**Scroll Wheel:** Yes (up/down)

**Left/Right Scrolling:** No

**Right & Left click life:** Up to 8 million clicks

**Wheel Button Life:** Up to 100,000 cycles

**Battery Type:** 1 AA

**Battery Life:** Up to 12 months

**Color:** Black

**Mouse Dimensions:** Width: 56 mm (2.2") Depth: 98 mm (3.86") Height: 32 mm (1.26")

**Receiver Dimensions:** Width: 19 mm (0.75") Depth: 6.3 mm (0.25") Height: 14.6 mm (0.57")

**Mouse Weight:** 50g (1.76oz)

**Receiver Weight:** 1.79g (0.06oz)

## Part Number

4Y50R20864 – (with battery) 4Y50R20865 – (w/o battery)

# Lenovo Essential USB Mouse



## Reliable

Plug-and-play wired USB connection never fails. Fully tested to rigorous standards to ensure compatibility across Lenovo systems

## Sculpted for comfort

Full-size mouse designed for all-day use. Ideal for both left- and right-handed usage.

## High-resolution sensor

Features 1600 dpi optical sensor for precise and accurate tracking. Works well on most surfaces.

## Specifications

**Connectivity:** Wired via USB

**OS Requirements:** Windows 7, Windows 8, Windows 8.1, Windows 10

**Cable Length:** 1.8 m (70.9")

**Sensor:** Optical Sensor

**Resolution:** 1600 dpi

**Scrolling:** 2-way Scroll Wheel (up/down)

**Number of Buttons:** 3 (left click, right click, scroll click)

**Button Life:** Left/right click - Up to 8 Million clicks

**Scroll wheel click:** Up to 100,000 clicks

**Design:** Ambidextrous

**Color:** Black

**Dimensions:** Width: 63 mm (2.48") Depth: 111 mm (4.37") Height: 34 mm (1.34")

**Weight:** 120 g (0.26 lbs)

## Part Number

4Y50R20863

# Lenovo Go USB-C Wireless Mouse



## Be Ready For Anything

Work whenever and wherever you please thanks to the lightweight design, precision blue optical sensor, and silent buttons of the Lenovo Go USB-C Wireless Mouse.

## Do More With Less

Get all the productivity features you'd expect but in a smaller form. Adjustable DPI sensitivity, shortcuts for online meetings, and a utility button that can be programmed to do whatever you need it to, this mouse does not compromise.

## Stay Connected Effortlessly

With up to 3 months rechargeable battery that reaches full charge in under 1.5 hours and a Lenovo Unified Pairing Dongle supporting multiple devices, staying connected has never been easier.

## Specifications

**Connectivity:** 2.4GHz wireless technology

**Color:** Thunder black; storm grey

**Scrolling:** 2-way scroll wheel (up/down)

**Resolution:** up to 2400 dpi

**Capacity:** 380 mAh Integrated Rechargeable Battery

**Battery life:** Up to 3 months battery life (may vary based on usage)

**Sensor:** Blue optical sensor

**Weight:** Starting at 71 g (0.16 lbs)

**Dimensions:** Length: 100mm (3.95"), Width: 62mm (2.43"), Height: 34mm (1.35")

## Part Number

4Y51C21216

# Lenovo Professional Wireless Laser Mouse



## Designed for All-day use

Designed for power users who want to work more effectively and efficiently, and provides ergonomic comfort for all-day use. The ambidextrous full-size design provides a secure grip whether you are left-handed or right-handed

## All-surface freindly

Suitable for use on many surfaces, the 1600 DPI resolution and laser sensor is perfect for tracking down to the tiniest detail. Complete tasks with ease and professional-grade accuracy.

## Plug-and-play

Connects easily with 2.4GHz wireless USB connection for stable connectivity. Supports Multiple Pairing Protocol for USB dongles, just get a replacement dongle in case the original gets lost.

## Specifications

**Color:** Black

**Connectivity:** 2.4 GHz Wireless via Nano USB

**Wireless Range:** 10 metres

**Hardware requirements:** Supports PCs with USB port

**Supported OS:** Windows 7, Windows 8, Windows 8.1, Windows 10

### Special Features:

Ambidextrous design

Multiple pairing protocol with Lenovo 2.4GHz Wireless replacement receiver

**Mouse Button:** 5 (left click, right click, scroll click, left/right tilt wheel)

**Scrolling:** Scroll Wheel (up/down/left/right)

**Resolution:** 1600 DPI

**Sensor:** Invisible laser sensor

**Power:** 2 AA batteries

**Battery life:** up to 24 months

**Dimensions:** Length: 64mm (2.52"), Depth: 113mm (4.45"), Height: 34mm (1.34")

**Weight:** 80g (0.18lbs)

## Part Number

4X30H56886



# ThinkBook Bluetooth Silent Mouse



## Work comfortably

Low-profile, minimalist design that is comfortable to rest a palm on during extended use, and makes it easy to fit into pockets and carry around.

## Get more done

Blue optical sensor allows the mouse to work on almost any surface, distraction-free silent buttons, and on-the-fly adjustable DPI controls.

## Connect conveniently

Effortlessly pair with up to two devices at once and quickly switch between them with the push of a button, thanks to Bluetooth 5.0 and Microsoft Swift Pair technology.

## Specifications

**Sensor:** Blue Optical Sensor

**DPI Resolution:** 3-level Adjustable (800, 1600, 2400)

**Scrolling:** 2-way Scroll Wheel

**Weight:** Starting at 0.14lb (65g)

**Supported OS:** Windows 10; Chrome

**Battery Type:** 1 x AA

**Battery Life:** Up to 12 Months

## Part Number

4Y50X88824

# ThinkPad Bluetooth Silent Mouse



## Work Comfortably

The ThinkPad Bluetooth Silent Mouse is sculpted to be comfortable to rest your palm on, with a low-profile, minimalist design that makes the mouse easy to carry and fit into pockets without bulging.

## Get More Done

Take your productivity to the max with a blue optical sensor that allows you to work on almost any surface. Distraction-free silent buttons, and on-the-fly adjustable DPI controls.

## Connect Conveniently

Effortlessly pair with up to two devices at once and quickly switch between them with the push of a button, thanks to Bluetooth 5.0 and Microsoft Swift Pair technology.

## Specifications

**Mouse Mode Sensor :** Blue optical sensor

**DPI Resolution :** 3-level adjustable (800, 1600, 2400)

**Scrolling :** 2-way scroll wheel

**Special Features :** Silent buttons

**Connectivity :** Bluetooth 5.0

**Quick Paring :** Supports swift pair

**Battery Type :** 1x AA Battery

**Battery Life :** up to 12 months

**Dimensions:** Width: 58mm (2.28") Depth: 106mm (4.17") Height: 27mm (1.06")

**Weight:** 65g (0.14lbs)

## Part Number

With Battery : 4Y50X88822 Without Battery : 4Y50X88823

# ThinkPad Essential Wireless Mouse



## All-day comfort

This sleek and stylish wireless is ergonomically designed for comfortable use by both left-handed and right-handed users.

## Precise control

Users can complete tasks with precision and accuracy thanks to its portable design and 1200 DPI optical sensor.

## Long-lasting performance

Up to 12 months battery life; connect compatible Lenovo devices with just one nano receiver and use without worry.

## Specifications

**Color:** Black

**Connection type:** 2.4 GHz wireless via nano USB

**Design:** Ambidextrous design

**Buttons:** 3 (left click, right click, scroll click)

**Scrolling:** Scroll wheel (up/down/left/right)

**Resolution:** 1200 DPI

**Sensor:** Optical sensor

**Power requirement:** 1 AA battery

**Battery life:** Up to 12 months

**Dimensions:** Width: 61mm (2.40"), Depth: 106mm (4.17"), Height: 33mm (1.30")

**Weight:** 60g (0.13lbs)

## Part Number

4X30M56887

# ThinkCentre Tiny 1L Dust Shield



## Better performance

Dust build-up in a PC can cause heating issues and affect system performance over time. ThinkCentre 1L Tiny Dust Shield prevents dust from entering ThinkCentre Tiny systems, ensuring users get reliable performance every time.

## Ease of use

The dust shield can easily be removed and washed when required. Done regularly, it minimizes the risk of system failure caused by overheating.

## Specifications

**Compatible Systems :** ThinkCentre Tiny 4<sup>th</sup> generation M7, M9 series

**Color :** Black

**Packed Weight :** 0.15kg (0.33lbs)

## Part Number

4XH0N04885

# ThinkCentre Tiny IV DVD Burner Kit



## Expand capabilities

Enable crisp and clear DVD playback and reliable DVD recording with this DVD Burner Kit specifically designed for the ThinkCentre Tiny.

## Mount compatible

Can be secured to a ThinkCentre Tiny PC using the ThinkCentre Tiny VESA Mount II (sold separately)

## Specifications

**Color :** Black

**Connection Type :** USB interface

**Compatibility :** Tiny 4

**Power consumption :** 5V/1.85A

**Average access time :** DVD-ROM 145ms CD-ROM 125ms

**Read Speed :** DVD-ROM 3.3-8x CAV 4.58-11.08 Mbytes/s

**Write Speed :** DVD-R(1-2x) 2xCLV 2.77Mbytes/s

**Sustained Transfer rate :** DVD-ROM 22.16 Mbytes/s(16x)max CD-ROM 6000kB/s (40x)max

**Packed Weight :** 500g (1.10 lbs)

## Part Number

4XA0N06917

# Lenovo Desktop Privacy Filter from 3M



## Prioritizing privacy

Patented microblouver technology darkens the screen at specific angles to protect on-screen data such as login credentials, company financial records and other private data secure from visual hackers.

## Use and re-use

Installation is quick and intuitive. Once in place, the high-grade optical film ensures high clarity with no distortion. Install and remove multiple times without worry - it does not leave any residue behind.

## One filter. Two sides.

Reversible design with two finishing options: gloss for better clarity or matte option with ant-reflective coating for more comfortable viewing in brighter environments.

## Specifications

**Filter Type:** All-In-One desktops filter

**Compatible Aspect Ratios:** 21.5", 23.8" & 27.0" All-In-One desktop displays

**Viewing Angle:** 60 degrees

**Brand:** Lenovo, 3M

**Surface Coating:** Durable anti-glare surface coating

**Transmission:** 68%

**Transmission Blockage Angle:** Greater than 30° degrees for observers to the sides of the user

## Part Number

For 21.5" displays : 4XJ0Q68426 For 23.8" displays : 4XJ0Q68427



# Lenovo Kensington MicroSaver Cable Lock



## Reliable protection

This 10mm (0.39") cable lock, one of the slimmest in the market, ensures business laptops and the data they store are well-protected. Adjacent ports can be used easily, thanks to the 180° hinge offering flexibility when inserting the key.

## Featherlight cable

The lightweight carbon steel cable offers strong protection, but with less weight and more flexibility. At 1.8 meters (6 feet) long, there's some freedom when it comes to device mobility.

## Wide compatibility

Suitable for users regardless of device. This cable lock is compatible with most Lenovo laptops, desktops, docks and monitors that feature a Kensington security slot.

## Specifications

**Locking Mechanism:** T-bar Lock for Kensington Lock Slots

**Cable Length:** 1.80m (70.9")

**Cable Thickness:** 10mm (0.39")

**Weight:** 180g (6.3oz)

**Color:** Black

## Part Number

4XE0N80914

# Lenovo Laptop Privacy Filter from 3M



## Prioritizing privacy

Patented microlouver technology darkens the screen at specific angles to protect on-screen data such as login credentials, company financial records and other private data secure from visual hackers.

## Use and re-use

Installation is quick and intuitive. Once in place, the high-grade optical film ensures high clarity with no distortion. Install and remove multiple times without worry - it does not leave any adhesive residue behind.

## One filter. Two sides.

Reversible design with two finishing options: gloss for better clarity or matte option with ant-reflective coating for more comfortable viewing in brighter environments.

## Specifications

**Filter Type:** Notebook Filter

**Compatible Aspect Ratios:** 11.6", 12.5", 13.3", 14.0", 15.6", 17.3" displays. Also available for touchscreen and Yoga models

**Viewing Angle:** 60 degrees

**Brand:** Lenovo, 3M

**Surface Coating:** Durable anti-glare surface coating

**Transmission:** 68%

**Transmission Blockage Angle:** Greater than 30° degrees for observers to the sides of the user

## Part Number

Varies by product.

# Lenovo Monitor Privacy Filter from 3M



## Privacy protection

Whether working from a public space or in an office environment, the filter's patented 3M microlouver privacy technology will block the vision of shoulder surfers preventing them from viewing the screen.

## Easy to use

Installation is quick and intuitive. Once in place, the high-grade optical film ensures high clarity with no distortion. Removing and reapplying multiple times is simple too - it does not leave behind any residue.

## Matte or gloss?

Reversible design with two finishing options: gloss for better clarity or matte option with ant-reflective coating for more comfortable viewing in brighter environments.

## Specifications

**Filter Type:** Monitor filter

**Compatible Aspect Ratios:** 17.0", 19.0", 19.5", 21.5", 22.0", 24", 27.0" & 28.0" displays

**Viewing Angle:** 60 degrees

**Brand:** Lenovo, 3M

**Surface Coating:** Durable anti-glare surface coating

**Transmission:** 68%

**Transmission Blockage Angle:** Greater than 30° degrees for observers to the sides of the user

## Part Number

Varies by monitor size

# ThinkVision T27hv-20



## Specifications

- 3-side NearEdgeless In-Plane Switching
  - Smart Guard powered by Glance by Mirametrix® Software - blurs screen when user looks away from the workstation
  - Smart Energy technology - turns off display when user is away from the workstation
  - Smart Traffic Light - warns others when user is video-conferencing
  - Lenovo's Smart Power technology - dynamically controls power throughout the monitor
  - Intelligent Synaptics AUDIOSMART® technology - picks up only sounds that come from in front of the screen, while canceling sounds that come from the left and right.
  - Integrated 1080p IRRGB camera - adjusts its angle to frame user perfectly and comfortably
- Width: 613.60mm (24.16") Depth: 208.00mm (8.19") Height: 473.60-608.60mm (18.65-23.96") 7.35kg (16.20 lbs)

## A display of professionalism

The 27-inch QHD In-Plane Switching panel offers exceptionally vivid visuals. Two 3W front-facing speakers deliver video-conferencing colleagues' input with crystal-clear sound. And thanks to the intelligent Synaptics AUDIOSMART technology, dual built-in microphones pick up only sounds that come from in front of the screen, while canceling sounds that come from the left and right. That way, the listener on the other side gets to hear clear sound without any background noise.

## Your business, secured and assured

Using the Glance by Mirametrix Software, the T27hv automatically blurs users' screen the moment they look away or get up and leave their desk. When the user is away from the workstation, the Smart Energy technology senses this and dims the display, both saving energy and doubling down on security. The Smart Traffic Light warns others when the user is video-conferencing or focusing on urgent tasks, resulting in reduced interruptions. Facial recognition helps in logging fast and provides an added layer of security. The built-in webcam shutter ensures the user can operate in complete privacy.

## All connectivity. No clutter.

# ThinkVision T27i-10



## Specifications

- USB3.0 hub - provides through-connection between a PC and accessories  
Width: 611.9mm (24.09") Depth: 269.8mm (10.62") Height: 403.3-513.3mm (15.88-20.21") 6.55kg (14.44lbs)

## Responsive and Rich Display

This 27" Full HD (1920x1080) display has up to 4m/s response time, and 72% NTSC gamut, providing 16.7M colours. The frame around the screen is as thin as 2mm (0.08"), making it ideal for multi-monitor setups. Connect devices with DisplayPort, HDMI or VGA.

## USB Hub

Onboard USB hub with 1x USB 3.0 Type-B Gen1 upstream port for connection to a PC, and 4x USB 3.0 downstream, enabling seamless connection of peripherals with a PC.

## Enhanced User Experience

Enhance user productivity with the built-in adjustable stand, optional sound bar speaker attachment and TÜV Eye Comfort certification.

# ThinkVision T27q-20



## Specifications

- Integrated smartphone holder
  - USB3.1 hub - provides through-connection between a PC and accessories
- Width: 614mm (24.17") Depth: 208mm (8.19") Height: 429.4-564.4mm (16.9-22.22") 7.44kg (16.4lbs)

## Uncompromised Visual Experience

Experience exceptional image quality on this 27" QHD display with 99% sRGB colour gamut and 1000:1 contrast ratio. Run multiple applications with ease by deploying two or more of these near-edgeless monitors side-by-side.

## Efficient and Smart Working

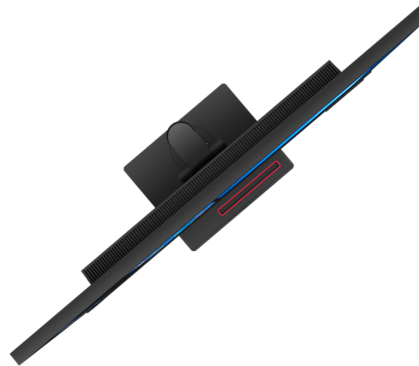
Maximize productivity by connecting directly to all essential peripherals via the onboard USB hub with 1x USB Type-B 3.1 Gen1 upstream port for connection to a PC, and 4x downstream ports (USB 3.1 Gen1). Connect an optional speaker via the Audio Out port for a complete audio visual experience.

## Ergonomic and Space-saving Solution

Place the monitor either on its sturdy stand or mount it on a wall via a VESA mount. The extended tilt and lift range enables users to find the perfect angle for working comfortably. The cable management and integrated phone holder further add to convenience, by keeping the desk space organized.



# ThinkVision T32h-20



## Specifications

- Integrated smartphone holder
  - USB-C + USB3.1 hub - provides through-connection between a PC and accessories
  - Smart Power - intelligently manages up to 75W of power output to connected USB devices
- Width: 714.6mm (28.13") Depth: 235mm (9.25") Height: 469.4-604.4mm (18.48-23.79") 9.85kg (21.72lbs)

## More Ways to Multitask

View greater detail on this 32" QHD display with 99% sRGB gamut and support for more than 1 billion colours. Multitask with ease by combining 2 or more of these nearly-borderless displays together.

## Productivity without Distractions

Integrated USB hub; the USB-C upstream port can connect to a laptop providing a one-cable solution for power, video, audio, and data. 4x USB 3.1 Gen 1 downstream ports enable onward connection to peripherals. Smart Power technology distributes up to 75W to other devices while optimizing overall energy consumption.

## Optimized Workspace

Users can adjust the screen with a high lift range and tilt angle, along with swivel and pivot functionality. Maintain an organized desk and maximize productivity with flexible cable management, an integrated phone holder, a minimized square base and VESA mount capability.

# ThinkVision T32p-20



## Specifications

- Integrated smartphone holder
- USB-C + USB3.1 hub - provides through-connection between a PC and accessories
- Smart Power - intelligently manages up to 75W of power output to connected USB devices

Width: 714.6mm (28.13") Depth: 235mm (9.25") Height: 469.4-604.4mm (18.48-23.79") 9.85kg (21.72lbs)

## Unparalleled Visuals

Get impeccably detailed visuals with this 4K resolution 32" display - with four times more pixels than a conventional Full HD monitor. The near-edgeless screen, 99% sRGB colour gamut and TÜV Rheinland eye comfort certification, ensure it's easy to work on - whether editing graphics or working with spreadsheets and documents.

## Uninterrupted Productivity

Integrated USB hub; the USB-C upstream port can connect to a laptop providing a one-cable solution that simultaneously transmits power, video, audio, and data. 4x USB 3.1 Gen 1 downstream ports enable onward connection to peripherals. Smart Power technology intelligently distributes up to 75W to other devices while optimizing overall power consumption.

## Organized Workspace

Choose between VESA mount capability to attach to a wall or connect a Lenovo Adjustable Height Arm, or use the built-in display stand with lift, tilt, swivel, and pivot functionality. A smaller base with a phone holder and cable management helps to keep desks organized.

# ThinkVision T34w-20



## Specifications

- Integrated smartphone holder
  - USB-C + USB3.1 hub - provides through-connection between a PC and accessories
  - Smart Power - intelligently manages up to 75W of power output to connected USB devices
- Width: 808.6mm (31.84") Depth: 245mm (9.65") Height: 462.4-597.4mm (18.21-23.52") 9.91kg (21.85lbs)

## Multitasking Made Easy

Make multitasking a breeze with this curved 34" WQHD resolution display. With a pronounced 1500R curvature and 21:9 screen ratio, users will find it more immersive, enabling them to work with multiple applications on a single screen. The exceptional 3000:1 contrast ratio and curvature reduces reflection and glare. Connect to legacy and modern devices with HDMI, DisplayPort or USB-C connectors.

## USB Hub

Integrated USB hub; the USB-C upstream port can connect to a laptop providing a one-cable solution that simultaneously transmits power, video, audio, and data. 4x USB 3.1 Gen 1 downstream ports enable onward connection to peripherals. Smart Power technology distributes up to 75W to connected devices while optimizing energy consumption.

## Ergonomics Enhanced

Designed keeping user comfort in mind, it has a higher lift range and broader tilt angles than most monitors. This minimizes wobble and allows users to adjust its height to fit their needs. The integrated phone holder and flexible cable management helps keep desks tidy and organized.

# Accidental Damage Protection

## Protect from the unexpected

Today's highly mobile workforce knows that accidents happen. Drops, bumps, and spills can damage even the most durable and well-engineered tablets, PCs, and Smart Displays. And since standard warranty terms and conditions don't cover accidental damage to devices, that's where Lenovo's Accidental Damage Protection service comes in.

Covering accidents beyond the system warranty and protecting your devices from non-warranty operational or structural failures incurred under normal operating conditions, **Accidental Damage Protection (ADP)** service helps IT departments avoid purchasing and managing extra inventory to replace damaged units.

ADP offers your organization:

- **Peace of mind:** Avoid unexpected costs associated with replacing damaged system parts.
- **Comprehensive coverage:** Labour, parts, and full system replacement in cases where repair is not possible.
- **Quality assurance:** Performed by Lenovo trained technicians using qualified parts.

Standard warranty terms and conditions don't cover accidental damage and experience shows that a significant portion of users' devices will be damaged and not covered under warranty in the first three years. This is where **ADP will help you save up to 80% of your repair or replacement costs** (depending on device type and repairs needed).



Although many manufacturers limit the number of claims to once per year, Lenovo provides continued coverage and multiple repairs, or a single replacement of your laptop or desktop.





# Advanced Deployment Services

## Empower users to setup and configure new devices

How much time does it take to provision and set up a new PC for a user? How do you migrate end-user information to their new device?

If you are deploying large numbers of new devices, Lenovo's **Advanced Deployment Services (ADS)** provide a low-cost alternative to outsourcing deployment, or consuming hours of internal IT time. Take the heavy lifting out of your PC deployments with a **customizable self-install wizard** that enables final configuration steps to be performed by end users instead of a technician. The user launches a setup wizard, answers a handful of easy questions, and **in minutes the system is customized**.

It can automate tasks from joining domains or creating user and email accounts to setting up printers, applying regional settings, installing apps and migrating data. Allow users to select which applications to install, or determine it automatically based on the user's member group in Active Directory, or the hardware of the device.

- Quick to enable; fully customizable solutions can be set up in just a few weeks
- You supply your own image or we can develop for you
- Enables installation customization to be achieved on a per users/system basis; you determine what settings and applications are available to what types of user
- Fully compatible with Active Directory
- A solution with ADS integration can be provided in a recovery partition
  - Self-install wizard enables PC set-up to be performed by end users
  - Low-cost alternative to consuming internal IT time
  - Automate tasks including network settings and software installation

Lenovo ADS improves the productivity and satisfaction of employees by enabling them to onboard new devices more quickly, and reduces your costs of using 3rd party providers or internal IT time.



“

automate tasks from joining domains or creating user and email accounts to setting up printers, applying regional settings, installing apps and migrating data

”

# Asset Recovery

## Maximize value at the end of technology lifecycle

Organizations today increasingly need to contend with data protection and environmental concerns when managing their assets. Some look to certifiably destroy data on old devices or maximize the recoverable value to offset future purchases, while others want to make sure their equipment is not going to landfill.

- **Cost-efficient asset disposition:** A major advantage of working with Lenovo is that we can help your business offset some of the costs of your technology refresh and simplify the transition from old to new with one convenient, single source solution. Our team has the expertise, experience and existing relationships with the best vendors in the ITAD (IT Asset Disposal) industry, allowing us to generate the maximum possible value for your business.
- **The confidence of proven processes and experience:** With a dedicated project management team leading you through the process, Lenovo will work with the world's leading recyclers and refurbishers to solve your e-waste dilemmas, negotiate the most aggressive value for your idle IT assets, maximize value recovery for systems based on age and condition, and ensure the safe disposition of assets at end-of-life, including secure data destruction.
- **Mitigating the danger of unmanaged data disposition:** Lenovo works only with partners who accommodate a variety of different data destruction standards such as DOD, NIST, NSA, and other specific governmental data destruction requirements. Our team will also ensure your organization remains compliant with privacy laws such as HIPPA, GDPR, CCPA, Sarbanes Oxley, Gramm- Leach-Bliley, and others.
- **Strategic, socially responsible and compliant:** Lenovo provides secure, documented disposition of IT assets and data, certified and documented validation of inventory and repair, and customized services to address the unique needs of your organization. We develop sustainable corporate disposition strategies for any technology hardware, and provide a range of strategies and options for asset disposition.

**Lenovo's Asset Recovery Services (ARS)** enables secure destruction of data, with minimum impact on the environment and a fair financial return for you. ARS is not just for Lenovo hardware but supports equipment from any manufacturer on a wide range of products, including PCs & tablets, monitors, servers, phones, printers, copiers and networking equipment.

“

Rely on Lenovo for best-practice hardware recycling and secure data disposition that's efficient, safe, environmentally sound and compliant with the rules and regulations in your territory.

”



# Premier Support

## Prioritize your business with Premier Support

Lenovo™ Premier Support manages routine support tasks, freeing IT focus on strategic efforts that move the organization forward. Boost end-user productivity and limit downtime with direct access to elite Lenovo engineers who provide unscripted, advanced hardware and software support.

- **Your direct line to a real expert:** Talk directly with Advanced Level 2 technical support agents located in your country. Each case will be dealt with end to end by the same support agent.
- **Don't wait for parts and fixes:** Premier customers get next business day onsite repairs. When an onsite visit is needed, we will accurately diagnose the problem beforehand, so an onsite technician will arrive prepared with the correct replacement part.
- **Do your end users frequently have software support needs?** Premier provides one point of contact for hardware and software issues. We support how-to questions and assist with hot fixes for a range of software in your organization.
- **Do your users travel internationally?** Users can find support when they are travelling overseas; phone numbers for Premier Support around the world can be found by entering your product serial number on [support.lenovo.com](https://support.lenovo.com)

Premier Support is ideal for organizations with limited technical resources, or with geographically dispersed employees, high IT dependency or worldwide operations. Increase employee satisfaction with access to professional technical staff that will get straight to solving their problems, offer priority replacement parts, software support and international coverage. IT teams can spend less time on basic troubleshooting and mundane tasks, enabling them to focus on more critical projects like digital transformation initiatives, upgrades to infrastructure, security audits and more.

“

Advanced engineers. End-to-end case management. Faster, first-time resolution.

”

# Premium Care

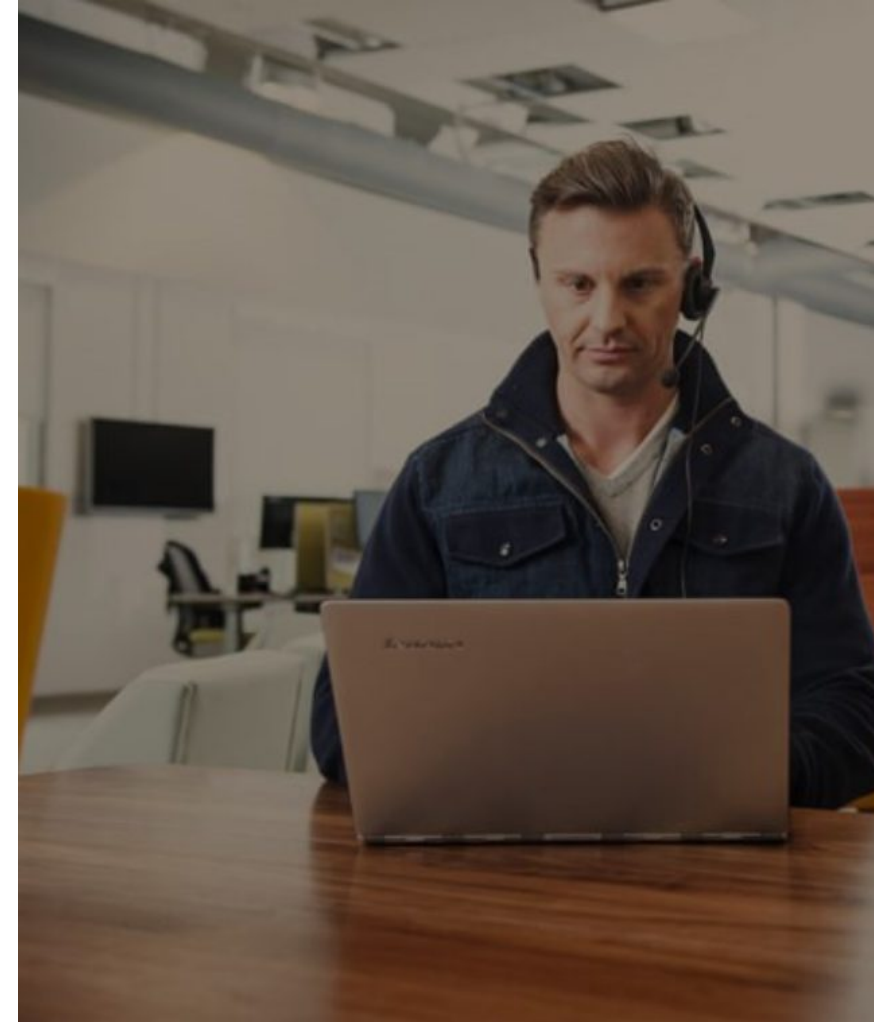
## after-sales service will never be the same again

Premium Care is the hassle-free solution for all your technical support needs. With this front-of-the-queue and straight-to-the-experts customer support service, Lenovo provides you peace of mind and faster solutions, allowing you to get the best from your new device.

Premium Care delivers a superior level of customer care and tech support exclusively for Lenovo PC customers with benefits like direct access to trained and experienced staff, priority replacement of vital parts, and prevention of issues. It is designed to help individuals and businesses manage day-to-day IT challenges quickly and more efficiently. From assistance in setting up the PC to OS reinstallation, there are a range of support services available.

- **Easy, hassle-free solutions:** While Premium Care provides one point of contact for hardware and software issues, it also supports "getting started" and "how-to" questions for a range of popular business applications such as Microsoft Office 365, the Adobe suite, Norton, Skype, and many more.
- **Real fast:** Real-time solutions, whatever the issue, on your first contact. If needed, our team will schedule an onsite visit for the next business day.
- **PC health check:** Free annual PC Health Check that allows our experts to spot issues before you do. This preemptive action helps you avoid PC problems.

Talk directly with experienced tech support agents located in your country using the dedicated support hotline. There's also chat and email support for flexibility. Select Premium Care as an add-on service for new devices at [lenovo.com](https://lenovo.com) or ask your sales representative to attach it to your in-store purchase.



“

Comprehensive Box to Boot support over the phone

”

# Return To Depot Repair Warranty

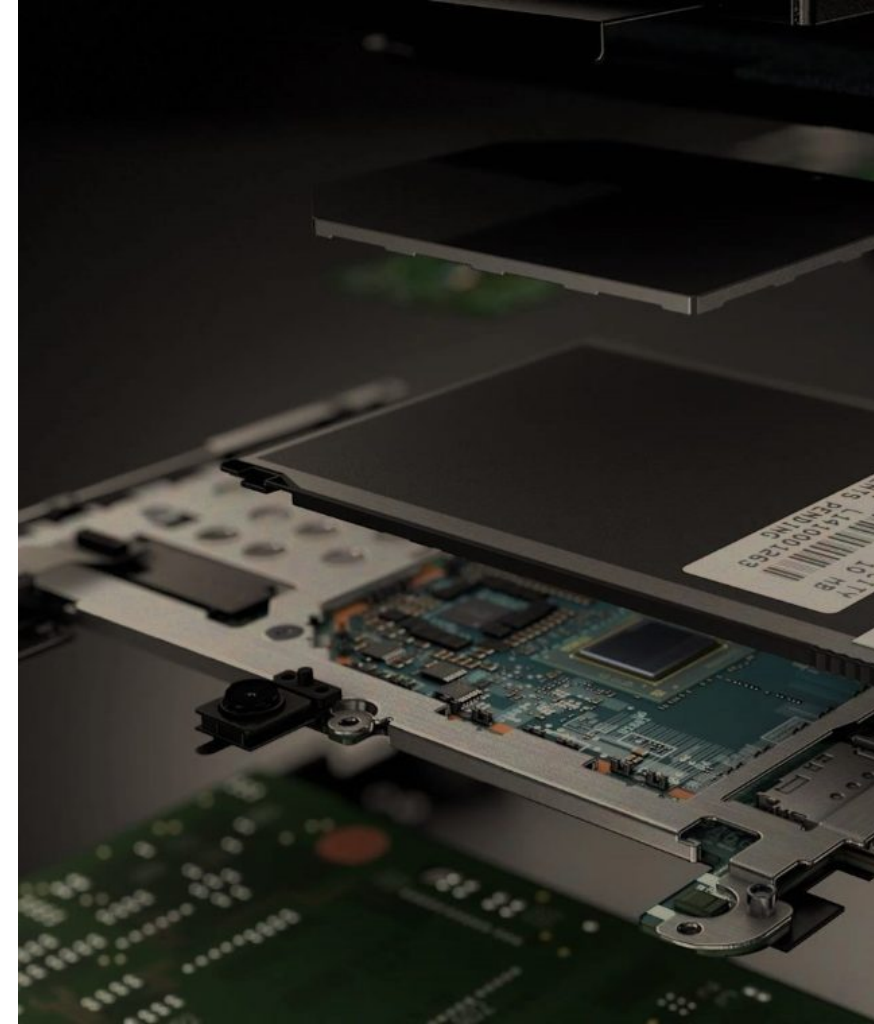
## repair at the service center made easy

Customers who are required to budget all PC expenses at the time of purchase can opt for Lenovo's Return to Depot service. Under this, if a problem with a Lenovo device cannot be resolved via telephone or through the use of a Customer Replaceable Unit (CRU), the product will be repaired or replaced at a designated service center.

Instead of having to take it to a service center, Lenovo will pay for all three legs of shipping – the box to the customer, freight to the service center, and freight back to the customer. The average time to repair is 7-10 business days.

- **Save on shipping costs:** All charges for shipping systems back and forth to the repair center, including packaging, is paid for by Lenovo
- **Avoid unplanned operational expense:** Accurately budget for IT expenses at the time of PC purchase
- **Convenient and reliable repair services:** Avoid the hassle of carrying taking units to the repair center

For faster resolution, there is the option of upgrading to Expedited Return to Depot that typically has the device back to you by the 3<sup>rd</sup> business day.



“

remote repairs made easy with shipping paid for  
by Lenovo

”



# Sealed Battery Warranty

## Guaranteed protection against battery failures

Typically a battery is designed to support 1,000 charge/discharge cycles over a period of 3 years. However, batteries degrade over time, and variables such as temperature, usage, and age affect performance. To determine if a battery should be replaced under warranty, Lenovo will run diagnostic software on the device to determine if the battery health is normal based on the age and charging cycle count.

Most of Lenovo's laptops and all of our tablets contain 'sealed' batteries, which means they need to be removed and replaced by a qualified technician in the event of a failure or severe degradation in performance.

- The low upfront cost of the Sealed Battery Warranty is significantly less than that of a replacement not covered by an extension policy
- Covers for a single replacement of the battery in years 2 or 3 of the extended period (the base warranty already covers a replacement in year 1)
- Must be purchased within the first year of when the device was purchased. Available for ThinkPad and ThinkBook laptop and tablet products, along with select Lenovo-brand products
- Combine with an On-site Warranty to enable a qualified technician to visit your premises and replace the battery without having to send the device to a repair centre

Laptop and tablet batteries have a 1 year base warranty only, so the **Sealed Battery Warranty** can be purchased for a nominal fee to upgrade this to 2 or 3 years. The length of the Sealed Battery Warranty upgrade does not have to match the length of the overall warranty for the device.

“

all batteries have a 1 year base warranty which can be upgraded to avoid unexpected costs and downtime

”

# Smart Image

## one dynamic image to simplify provisioning

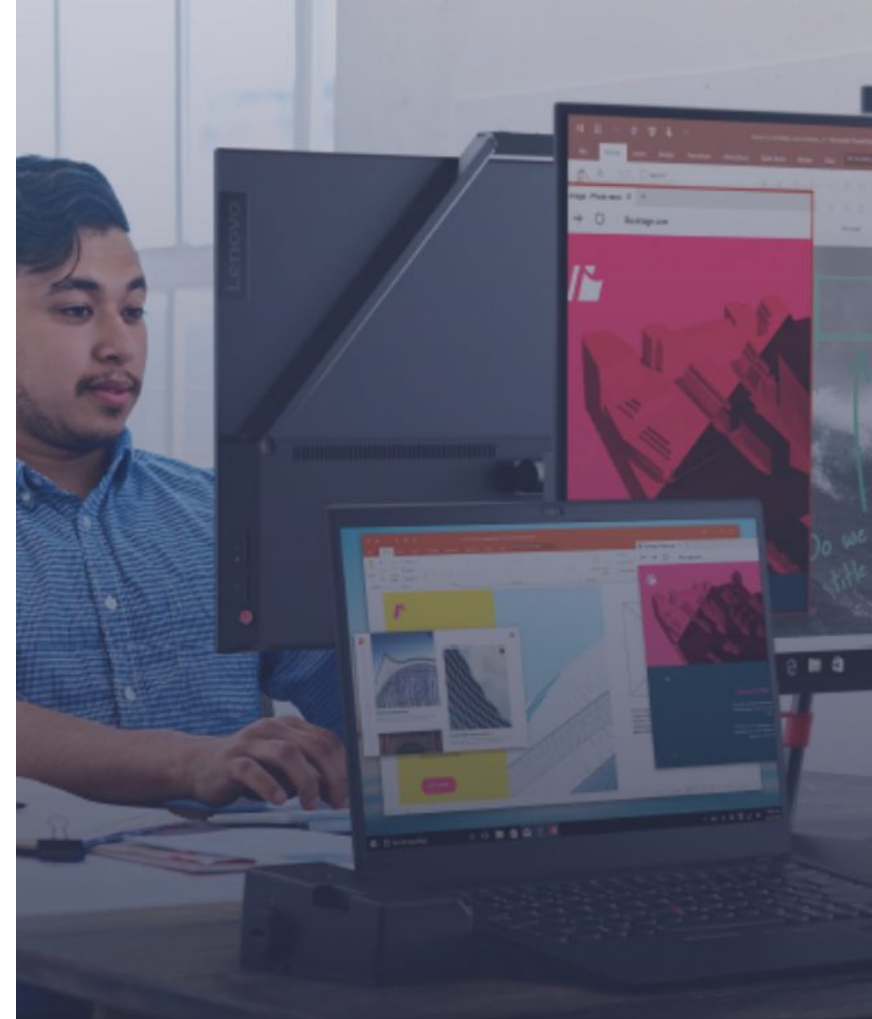
Managing multiple images for different devices can be time-consuming, as each must be regularly tested and verified as driver updates, hot fixes or preloaded app requirements change.

Lenovo Smart Image creates a **single dynamic image** that is **compatible across multiple Lenovo devices**; especially useful for growing businesses who may be purchasing new devices in waves of expansion.

You supply us your hardware-independent image, and we will add support for multiple Lenovo products. For added flexibility, we can update it quarterly, so as drivers are updated they are reflected in your image.

- Eliminates the need to manage multiple images and ensures compatibility across hardware platforms
  - Can be executed in just a few days
  - The solution is network, service partition, USB, and DVD deployable
  - Modular installation process enables you to choose which content you need in your solution
  - Reduce the storage footprint of the image with common drivers used across multiple models
- Converts your image to make it compatible across Lenovo devices
  - Useful for businesses purchasing devices in waves of expansion
  - Network, service partition, USB and DVD deployable

With Lenovo Smart Image, **time spent on a hardware transition can be reduced from weeks to a matter of days**. In addition, your ongoing image maintenance costs will drop significantly.



“

Lenovo Smart Image eliminates the need to manage multiple images and ensures compatibility across hardware platforms

”

# Warranty Extensions

## Customizable warranty services for your business

Warranty Extensions extend the term of the base warranty at the same service level, offering longer protection against unexpected repair or replacement costs. They are available for periods of up to five years for Think products and up to three years for Idea / Lenovo branded products. Depending on the initial base warranty of the system, service plans are available with the following service levels:

- **Purchase additional warranty periods** from 1 to 5 years; buy the warranty extension at the same time as new devices OR at any point afterwards
- **On-site Service:** if the problem can't be resolved over the phone, a technician will be dispatched to arrive on-site, typically the next day
- **Mail-in Service:** parts and labour repair coverage, where you are responsible for shipping to us
- **Depot Service:** parts and labour repair coverage, where shipping is paid for by Lenovo (typical turnaround time is 7-10 days including shipping)
- **Expedited Depot Service:** parts and labour coverage with expedited turnaround 3 business days

Talk to us about your replacement cycles and how we can customize a warranty package for your unique needs.

- **Cost savings:** Minimize unplanned operating and maintenance expenses.
- **Global coverage:** Consistent service levels for multinational organizations, with in-region and local-language support.
- **Increase uptime and productivity:** Convenient On-site and Expedited Depot options.
- **Customize to your needs:** Lenovo's flexible warranty options are designed to fit the varying needs within an organization. Match service coverage duration with the expected lifecycle of your PCs.

Warranty Upgrades enable customers to vary response time and level of service to match critical support needs. These options can be selected at the time of purchase or within the term of initial base warranty coverage.



“

50% of businesses claim to purchase extended warranties

”



# First Boot Services

## give your team a headstart

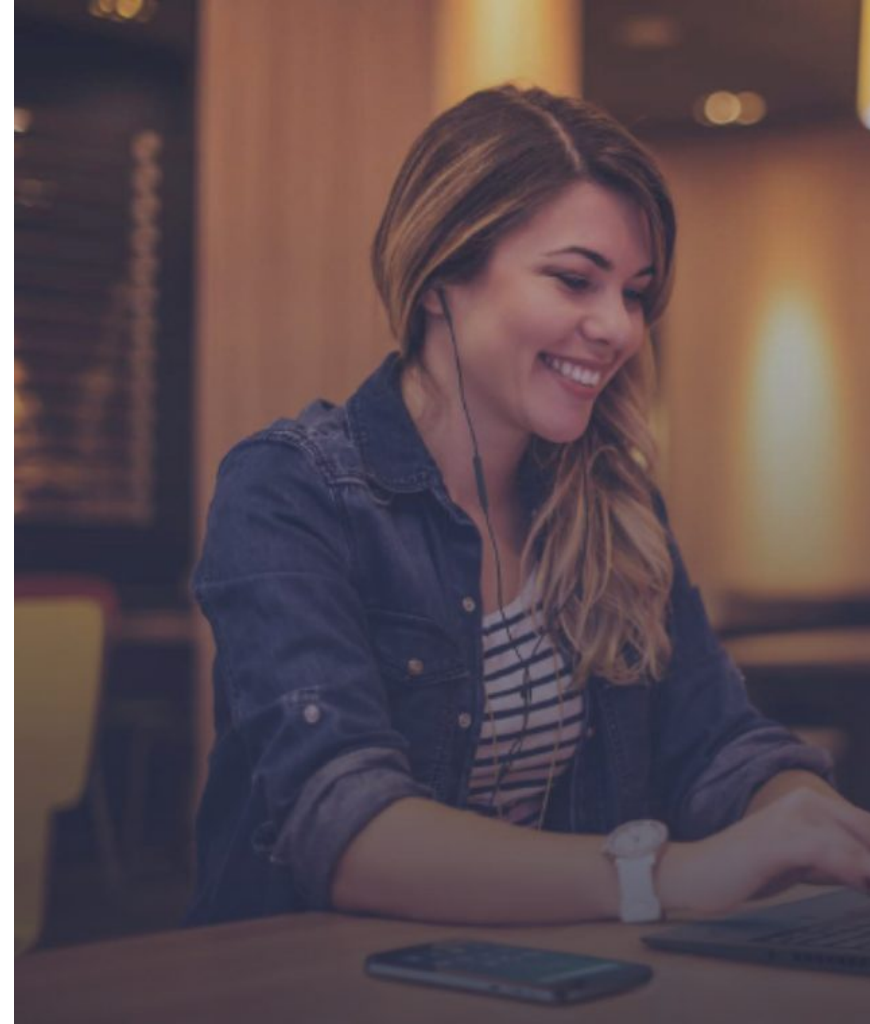
How long does it take your IT staff to boot each new PC and customize it for your environment and users? Are there other strategic projects they could focus on if less time was spent on PC deployment tasks like software and driver installation?

Lenovo's **First Boot Services** offer you a fast, flexible and low-cost solution. It shifts expensive, labour-intensive desk-side services to an automated process that saves money and improves end-user satisfaction.

With First Boot Services, the PC setup tasks that do not require your network access, can all be moved into Lenovo manufacturing. For example: installing a custom image, anti-virus software, drivers, device management software, enabling drive encryption, etc.

- **Save time & money:** save 20 minutes to an hour of deployment time per device.
- **Consistency:** across devices for drivers, patches and so on, with fewer people downloading updates at different times.
- **Enables consistency across devices for drivers and patches:** Streamlining the deployment process, Lenovo's First Boot Services eliminates or minimizes the time your IT team needs to spend loading common applications, images, or enabling encryption.

For those tasks that do require access to your network, our **Advanced Deployment Service** enables your final configuration steps to be performed by end users at their desks, saving even more time for IT staff.



First Boot Services remove the number of steps required to set up a new PC, saving money and improving end-user satisfaction.



# Technician Installed Customer Replaceable Unit

## Replace parts with professional installation

Under warranty, some internal parts in our devices are considered Customer Replaceable Units (CRUs). In the event of a device failure, if we diagnose the faulty part is a CRU, we would ship the replacement part to your premises with instructions for self-installation.

With Lenovo's **Technician Install CRU** service, parts that would normally be installed by a user are now installed by a certified technician that we dispatch to your business premises. To use this service, the product must be covered by a Lenovo On-Site Warranty or Lenovo Premier Support.

- **Ultimate convenience:** On-site + Technician Install of CRU parts is ideal for remote locations where technical resources in your organization are not easily available, or for businesses who want to minimize risk and down-time associated with in-house repair.
- **Optimizes IT support time:** Free your IT staff from internal parts installation so they have more time to deal with mission critical business issues.
- **Quality assurance:** Consistent, best-in-class quality with Lenovo-Qualified Parts and Technicians sent to your premises.

Sealed Battery Warranty Extension is available for ThinkPad notebooks and tablets with integrated (sealed) battery, as well as for selected Lenovo-branded products. The battery service period must match the system warranty.



“

parts that would normally be installed by a user  
are now installed by a certified technician

”

# On-site Service

## fast, on-site support

Today's technology and Lenovo's extensive reliability testing means it's unlikely to occur frequently, but if you are supporting hundreds of users and there are issues with mission-critical hardware, fixing and replacing parts suddenly becomes a priority.

Whether it's executives or specialist roles that need fast support, a large number of our customers select On-site Service.

With On-site service, if a problem can't be fixed remotely, a technician will visit your location to repair a device. The date and time for On-site service will be mutually agreed upon, normally by the next business day, and we will either repair or exchange the failing machine at your location and verify functionality.

With On-site Service you can:

- **Save resources:** Save time and money by having Lenovo support available onsite to address issues quickly.
- **Optimize efficiency:** Achieve maximum uptime and productivity when operating within a mission-critical environment.
- **Minimize unplanned expense:** Accurately budget for IT expenses at the time of PC purchase.

“

if a problem can't be fixed remotely, a technician  
will visit your location to repair a device

”

# Encryption Services

## pre-encrypt your devices for easy deployment

How do you currently encrypt your systems? Manual encryption can take your IT team an average of 120 minutes per device – time that can otherwise be used to focus on activities that deliver greater business value.

Encryption Services from Lenovo provides **factory-enabled full drive encryption**, eliminating the long wait time needed when full drive encryption is deployed outside of manufacturing.

- **Reduce the burden on your IT team:** your onsite technical staff can save approximately 120 minutes of encryption time per device.
- **Cut down on IT expenses:** save time and expenses with a reliable single-source solution.
- **Minimize risk of penalty:** most compliance standards today mandate encryption, or impose lesser penalties on encrypted drives.
- **Your choice:** we can use whichever encryption method and software you choose.



“

manual encryption can take your IT team an average of 120 minutes per device

”



# Expedited Depot Repair Warranty

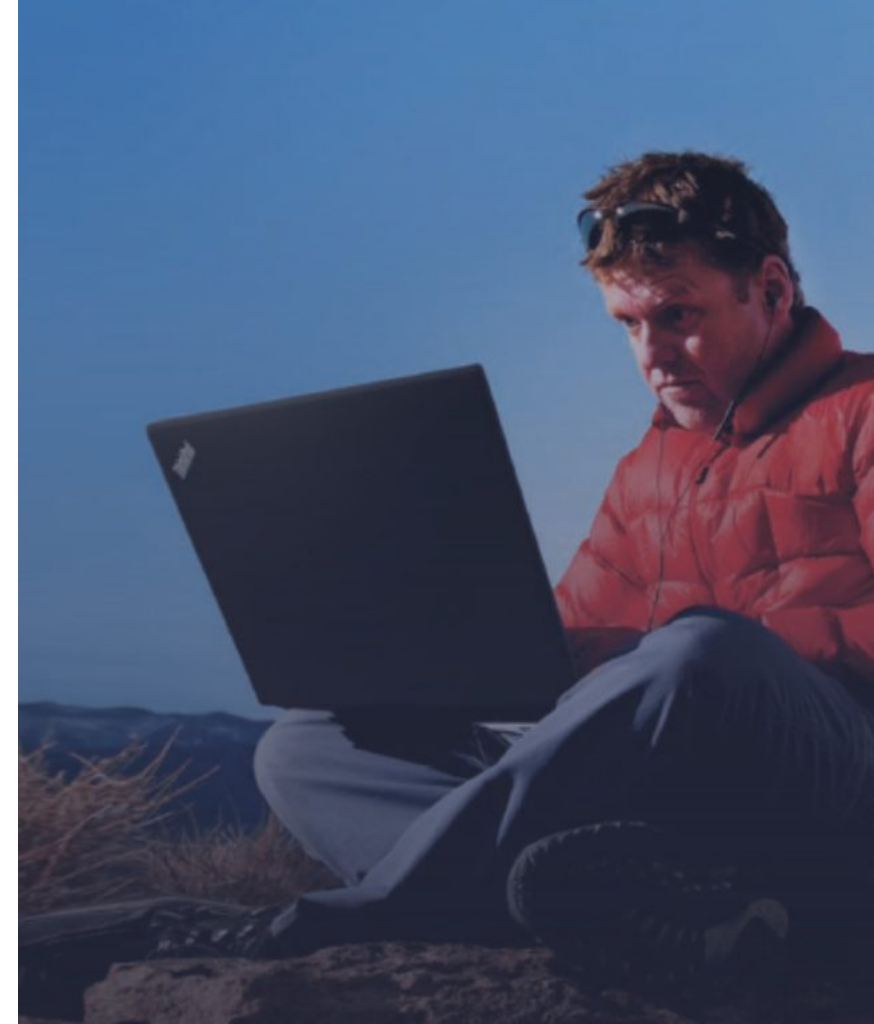
## minimize downtime, enhance operational efficiency

When uptime and productivity are essential to your business operations, every extra hour spent waiting to get your system issues resolved could prove costly.

Lenovo's **Expedited Depot** service speeds up our standard 7-10 business-day turnaround time. Once the defective or damaged systems are sent in for servicing, we will normally get the repaired system **back by the 3rd business day**.

- **Priority support:** save time and money by having Lenovo support available to address issues quickly.
- **Reduce downtime:** achieve maximum up-time and productivity with a wait-time of just 3 days rather than 7-10 days of standard depot/courier.
- **Avoid unplanned operational expenses:** accurately budget for IT expenses at the time of PC purchase.

With Expedited Depot, you get **front of the line priority for repairs in the depot**. And in the unlikely event that needed parts are back ordered, you will also receive priority for back ordered parts.



“

achieve maximum up-time and productivity  
with a wait-time of just 3 days

”

# Asset Tagging

## track and protect your devices right out of the box

Loss or theft of devices is a growing problem that can have a far-reaching impact on your organization. Tamper-proof physical labeling of devices can deter theft and make it much more likely that lost devices are returned.

Asset tagging can be done during the manufacturing process, ensuring your devices are trackable right out of the box. This information can also be **loaded into the BIOS** enabling easy import of data into asset management systems.

Executed in production, Asset Tagging ensures your PCs are protected from day one, easily identifiable and trackable right out of the box. Lenovo offers flexible options to meet the exact needs of your organization.

- **Unique Branding Opportunities:** Make an exclusive limited edition. Impress customers, reward employees. Include graphics and text. Showcase your logo, organization name, phone number, and more. Asset Tagging, Laser Etching and UV Printing can be customized for your needs.
- **Easy and Effective Asset Management:** Save time by enabling detailed asset information to be quickly and accurately imported into your asset management system.
- **Streamlined Deployment:** Done in the factory, asset tagging ensures your machines arrive with customized tags for quick and accurate tracking on day one.

Combine Asset Tagging with Lenovo's **Laser Etching Services** to provide a further means of identifying your organization's assets and promoting your brand. Laser Etching can be used to apply identifying information and custom graphics to the cover of a wide range of ThinkPad products; ideal for branding and customized gifts.

“

tamper-proof physical labelling of devices can deter theft and make it much more likely that lost devices are returned

”





# Keep Your Drive

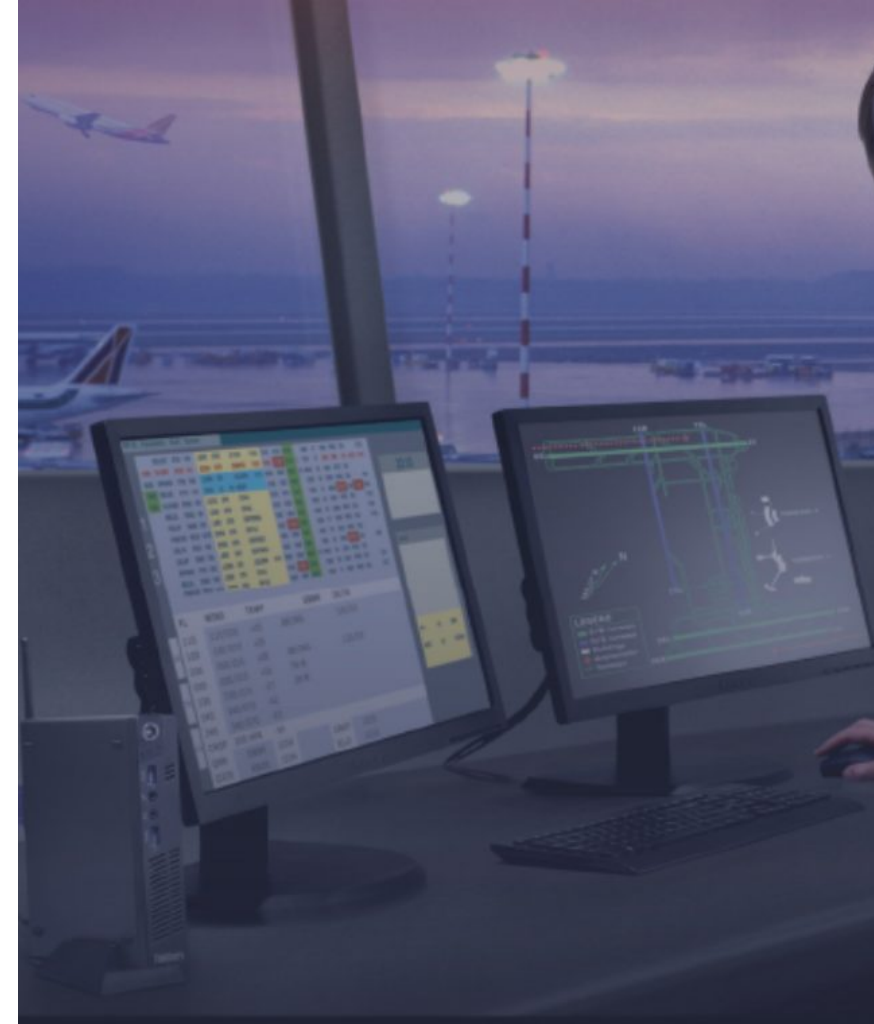
## secure your data with Keep Your Drive (KYD)

What happens to the data residing in your systems in the event that a storage drive fails and needs to be replaced? Under the terms of the Lenovo Limited Warranty, when we replace a defective part, that part becomes the property of Lenovo.

The **Keep Your Drive Service** allows you to keep your drive(s) and dispose of business data on your terms, improving data security and ensuring compliance with data privacy and retention requirements, as well as mitigating civil liability risks associated with data breaches.

Because our diagnostics system can identify when a disk drive is defective, as soon as you report a problem we can quickly determine if the drive needs to be replaced. We will then authorize you to remove the drive before giving the device to us for installation of a new storage drive.

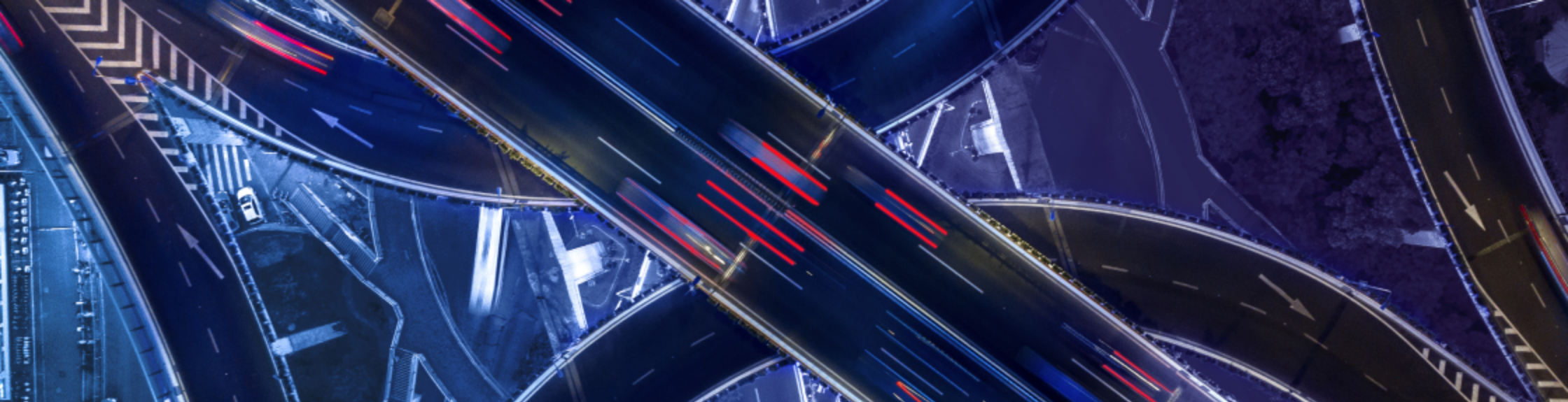
- **Predictable budgets:** provides predictable upfront costs versus finding budget in the event of drive failure.
- **Regulatory compliance & protection:** avoid the legal and monetary repercussions associated with a breach in data security.
- **Comprehensive coverage:** covers multiple drives in a system and multiple failures, for both HDD and SSD drives.
- **Data remains secure:** if your organization handles sensitive data, it eliminates the need for tracking failed drives in transit.



“

Because our diagnostics system can identify when a disk drive is defective, as soon as you report a problem we can quickly determine if the drive needs to be replaced

”



**User free-text for QR. Ready  
to bring your vision to life?**

07383985387

office@bloommellowtech.co.uk

www.bloommellowtech.co.uk