

ThinkPad X12 Detachable GEN 1

Smarter
technology
for all

Lenovo

Professionals who spend their days in the field or zigzagging between their home office and customer visits need a portable, adaptable, durable device. The new ThinkPad X12 Detachable from Lenovo fulfills that need with a device that's more powerful than a tablet, but less cumbersome than a laptop. It combines the power, security, and durability you've come to expect from a ThinkPad with the portability, innovation, and sleek design of Lenovo's X series.

Used alone, its 12-inch FHD+ In-Plane Switching display with up to the latest Intel® Core™ i7 vPro® Quad Core processor and Intel® Iris® Xe graphics is more powerful than the typical tablet. Attach the folio keyboard, and it becomes a lightweight, yet functional alternative to your business laptop.

For technicians in the field, LTE CAT9 capability ensures there's always a connection, while rigorous in-house and MIL-SPEC 810G testing ensures ThinkPad X12 Detachable works well for users who work outdoors, out of utility vans, or in other harsh environments. Add features like a fingerprint reader and IR camera with facial recognition to an enhanced suite of built-in ThinkShield security and Intel vPro® platform solutions, and you have a detachable like no other on the market.



ThinkPad X12 Detachable GEN 1



THINKPAD PERFORMANCE

Raise your expectations for what a detachable can do. ThinkPad X12 Detachable is loaded with power including up to 11th generation Intel® Core™ i7 vPro® Quad Core processor, up to 16GB LPDDR4x memory, and up to 1TB NVMe SSD storage. Time-saving features, like Modern Standby, keep email and other applications synced even while the device is asleep, ensuring instant productivity upon waking. Plus, a Thunderbolt™ 4 port ensures fast connections to accessories and peripherals.



ROAD READY

ThinkPad X12 Detachable is built for professionals who are in the office one day and in the field another. It is ultra-thin, with the tablet alone measuring less than 9 mm in depth, and lightweight, too, with the tablet and keyboard together weighing just over 1.1 kg. Users can expect up to 9.98 hours of battery life¹—more than enough to get you through a day of meetings or customer visits. Connectivity is never an issue thanks to WiFi 6 and LTE CAT9 capabilities. And neither is durability since ThinkPad X12 Detachable is designed and MIL-SPEC tested to withstand extreme heat and cold, dust, drops, spills, direct impact, and more.



GET CREATIVE

Users can take notes, sign, and edit documents on ThinkPad X12 Detachable using the magnetic Lenovo Precision Pen with Tilt. The FHD+ IPS 3:2 ratio (400nit) narrow bezel display features dazzling Intel® Iris® X^e graphics and is constructed with Corning® Gorilla® Glass 5 for added durability. The folio keyboard is perfect for keeping up with daily tasks while on the road and includes the familiar Lenovo TrackPoint and backlit keys. ThinkPad X12 Detachable also has dual, 5MP front-facing/8MP rear-facing cameras for better video conferencing and Dolby® Premium App for fine tuning.



ENHANCED SECURITY

In addition to an enhanced suite of built-in ThinkShield security solutions, such as a dTPM 2.0 chip, ThinkPad X12 Detachable has biometric security features that include a fingerprint reader on the keyboard and an IR Camera with facial recognition and webcam privacy shutter on the tablet. These solutions are further complemented by the Intel vPro® platform, which brings together the best of Intel innovations for unmatched security to better safeguard data and devices.



Lenovo

responsiveness

ThinkPad X12 Detachable features “always on” responsiveness that allows you to resume working within less than a second of waking the device.

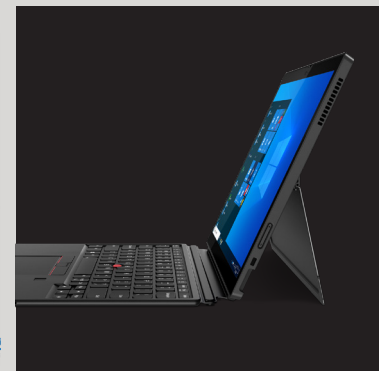
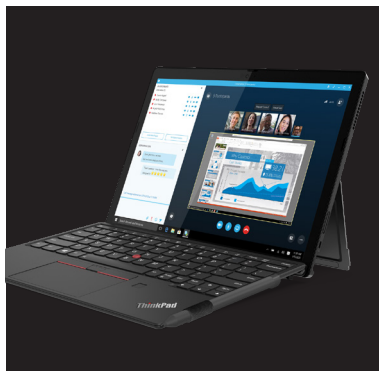
productivity

Stay productive in the field and on the road with up to 9.98 hours of battery life and Rapid Charge technology that goes from zero to 80% charge in one hour.¹

security

Enhanced ThinkShield features and biometric authentication combine with the built-for-business Intel vPro® platform for unmatched security to keep data and devices secure.

¹Based on testing with MobileMark 2018. Battery life varies significantly with settings, usage, and other factors.



Lenovo ThinkPad X12 Detachable GEN 1

performance

PROCESSOR

Up to 11th generation Intel® Core™ i7 vPro® Quad Core processor

OPERATING SYSTEM

Windows 10 Pro

GRAPHICS

Intel® Iris® X® Graphics

CAMERA

5MP front-facing Hybrid IR camera with webcam privacy shutter, 8MP rear-facing

MEMORY

Up to 16GB LPDDR4x

STORAGE

Up to 1TB NVMe SSD

BATTERY

Up to 9.98 hours¹, 42Whr battery

AC ADAPTER

Type-C 65W (supports Rapid Charge)

AUDIO

Dolby® Premium App
Dual array microphones

security

Intel vPro® Platform
Touch Fingerprint Reader
IR camera with webcam privacy shutter
dTPM 2.0 chip
Kensington™ lock slot

connectivity

INPUT/OUTPUT PORTS

1x Thunderbolt™ 4
1x USB 3.2 Type-C
1x NanoSIM
1x Audio (Headphone and Microphone Combo Jack)

WIFI

WiFi 6 (WLAN 802.11 AX)
LTE CAT9*
Bluetooth® 5.1

NFC

Yes*



DOCKING

Thunderbolt 4
USB 3.2 Type-C Dock

design

DISPLAY

12.3" FHD+ IPS 3:2 ratio (400nit) with Gorilla® Glass 5

DIMENSIONS (W X D X H)

283.3 x 203.5 x 8.8 mm (14.5 mm with keyboard)
11.15 x 8.01 x 0.35 in (0.57 in with keyboard)

WEIGHT

Tablet 760g/1.67lbs
Tablet + kyb: 1.1kg/2.42lbs

MIL-SPEC 810G

Yes

KEYBOARD

Backlit, detachable folio keyboard with fingerprint reader and touchpad

PEN

Lenovo Precision Pen
Lenovo Digital Pen

COLOR

Black

optional services

PREMIER SUPPORT

Bypass phone menus and scripted troubleshooting to access advanced-level technicians with the expertise needed to quickly diagnose and solve problems. Get a consistent point of contact within Lenovo to ensure that your case resolution is professionally managed from start to finish.^{3,4}

ACCIDENTAL DAMAGE PROTECTION (ADP)

Protect your investment from operational or structural damage caused by common accidents like drops, spills, or electrical surges. This protection plan helps with predictable budgeting, minimizes unexpected repair costs and provides significant savings relative to the cost of non-covered repairs.^{3,4}

WARRANTY EXTENSION (1-YEAR BASE, UP TO 3 YEARS TOTAL) This fixed-term, fixed-cost service helps you accurately budget for PC expenses, protect your investment, and lower the cost of ownership over time.¹

¹ Based on testing with MobileMark 2018. Battery life varies significantly with settings, usage, and other factors.

² Optional

³ Up to 5 years total duration

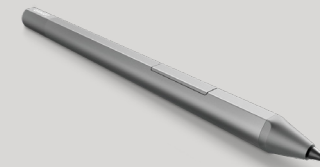
⁴ May not be available in all regions

accessories



THINKPAD X12 DETACHEBLE CASE PN: 4X41A08251

Low-profile, slim design with bump and scratch protection, corner shock-absorption, and essential drop protection (up to 80cm).



LENOVO PRECISION PEN PN: 4X80Z50965

The Lenovo Precision Pen with tilt sensing detection provides an industry-leading 4096 levels of pressure sensitivity for natural writing and sketching along with battery life of 400 days. It attaches magnetically to the side of ThinkPad X12 Detachable Gen 1 and connects via Bluetooth. It also features two function buttons that can be customized via the Lenovo Pen App.



THINKPAD X1 USB-C PORT REPLICATOR PN: 4XH1C12753

This compact accessory connects to the USB-C port on ThinkPad X12 Detachable Gen 1 to add two USB-A ports, one USB-C port, one HDMI port, and readers for both micro and standard SD cards.

©2020 Lenovo. All rights reserved. These products are available while supplies last. Prices shown are subject to change without notice. For any questions concerning price, please contact your Lenovo Account Executive. Lenovo is not responsible for photographic or typographic errors. Warranty: For a copy of applicable warranties, write to: Warranty Information, 500 Park Offices Drive, RTP, NC 27709, Attn: Dept. ZPYA/B600. Lenovo makes no representation or warranty regarding third-party products or services. Trademarks: Lenovo, the Lenovo logo, Rescue and Recovery, ThinkPad, ThinkCentre, ThinkStation, ThinkVantage, and ThinkVision are trademarks or registered trademarks of Lenovo. Microsoft, Windows, and Vista are registered trademarks of Microsoft Corporation. Intel, the Intel logo, Intel Inside, Intel Core, and Core Inside are trademarks of Intel Corporation in the U.S. and/or other countries. Other company, product and service names may be trademarks or service marks of others.

Lenovo